

## Zinc Carriage Bolts & Nuts

also available in Stainless Steel



**Zinc**



DOMED



EN 14592:2008

**CORROSION RATING**



Clean, dry & low humidity environments

A domed head bolt with a square anti spin shoulder mainly used for clamping timber or attaching ironmongery to timber.

**NOTE:** Fully threaded up-to and including 150mm. Partially threaded thereafter.

Product Code	Size (mm)	Nut Socket Size (mm)	Pack Qty (pcs)	Carton Qty (packs)	Pallet Qty (packs)
<b>TIMBAG</b>					
0640CBB	M6 x 40	10	120	5	600
0650CBB	M6 x 50	10	90	5	600
0675CBB	M6 x 75	10	75	5	600
06100CBB	M6 x 100	10	55	5	600
06130CBB	M6 x 130	10	35	5	600
06150CBB	M6 x 150	10	25	5	600
0850CBB	M8 x 50	13	55	5	600
0875CBB	M8 x 75	13	40	5	600
08100CBB	M8 x 100	13	40	5	600
08110CBB	M8 x 110	13	35	5	600
08130CBB	M8 x 130	13	30	5	500
08150CBB	M8 x 150	13	24	5	600
08180CBB	M8 x 180	13	14	5	600
08200CBB	M8 x 200	13	12	5	600
1050CBB	M10 x 50	17	45	5	600
1075CBB	M10 x 75	17	28	5	600
10100CBB	M10 x 100	17	24	5	600
10120CBB	M10 x 120	17	20	5	600
10130CBB	M10 x 130	17	20	5	600
10150CBB	M10 x 150	17	14	5	600
10180CBB	M10 x 180	17	12	5	600
10200CBB	M10 x 200	17	10	5	400
1250CBB	M12 x 50	19	18	5	600
1275CBB	M12 x 75	19	18	5	600
12100CBB	M12 x 100	19	14	5	600
12130CBB	M12 x 130	19	12	5	600
12150CBB	M12 x 150	19	10	5	600
12180CBB	M12 x 180	19	8	5	600
12200CBB	M12 x 200	19	5	5	400
<b>TIMPAC</b>					
0640CBP	M6 x 40	10	8	5	-
0650CBP	M6 x 50	10	4	5	-
0675CBP	M6 x 75	10	6	5	-
06100CBP	M6 x 100	10	4	5	-
06130CBP	M6 x 130	10	4	5	-
06150CBP	M6 x 150	10	2	5	-
0850CBP	M8 x 50	13	4	5	-
0875CBP	M8 x 75	13	4	5	-
08100CBP	M8 x 100	13	4	5	-
08110CBP	M8 x 110	13	3	5	-
08130CBP	M8 x 130	13	3	5	-
08150CBP	M8 x 150	13	2	5	-
08180CBP	M8 x 180	13	2	5	-
1050CBP	M10 x 50	17	2	5	-
1075CBP	M10 x 75	17	3	5	-
10100CBP	M10 x 100	17	2	5	-
10120CBP	M10 x 120	17	2	5	-
10130CBP	M10 x 130	17	2	5	-
10150CBP	M10 x 150	17	2	5	-
10180CBP	M10 x 180	17	2	5	-
1250CBP	M12 x 50	19	2	5	-
1275CBP	M12 x 75	19	2	5	-
12100CBP	M12 x 100	19	2	5	-
12130CBP	M12 x 130	19	2	5	-
12180CBP	M12 x 180	19	2	5	-

TYPE - BAG/PAK

SUB TYPE - BAG15/PAK15

## Grade 4.8 (Box Only)

Product Code	Size (mm)	Nut Socket Size (mm)	Pack Qty (pcs)	Carton Qty (packs)	Pallet Qty (packs)
<b>BOX</b>					
0620CB	M6 x 20	10	200	12	384
0625CB	M6 x 25	10	200	11	352
0630CB	M6 x 30	10	200	11	240
0640CB	M6 x 40	10	200	9	288
0650CB	M6 x 50	10	200	6	192
0660CB	M6 x 60	10	100	12	384
0665CB	M6 x 65	10	100	12	384
0670CB	M6 x 70	10	100	8	240
0675CB	M6 x 75	10	100	9	288
06100CB	M6 x 100	10	100	9	288
06110CB	M6 x 110	10	100	9	288
06120CB	M6 x 120	10	50	10	320
06130CB	M6 x 130	10	50	10	320
06140CB	M6 x 140	10	50	10	320
06150CB	M6 x 150	10	50	10	320
0820CB	M8 x 20	13	200	6	192
0825CB	M8 x 25	13	100	12	384
0830CB	M8 x 30	13	100	8	240
0835CB	M8 x 35	13	100	8	240
0840CB	M8 x 40	13	100	8	240
0845CB	M8 x 45	13	100	8	240
0850CB	M8 x 50	13	100	8	240
0860CB	M8 x 60	13	100	6	192
0865CB	M8 x 65	13	50	12	384
0870CB	M8 x 70	13	50	12	384
0875CB	M8 x 75	13	50	9	288
0880CB	M8 x 80	13	50	9	288
0890CB	M8 x 90	13	50	9	288
08100CB	M8 x 100	13	50	9	288
08110CB	M8 x 110	13	50	9	288
08120CB	M8 x 120	13	50	6	192
08130CB	M8 x 130	13	50	6	192
08140CB	M8 x 140	13	25	10	320
08150CB	M8 x 150	13	25	10	320
08160CB	M8 x 160	13	25	10	320
08180CB	M8 x 180	13	25	10	320
08200CB	M8 x 200	13	25	10	320
1025CB	M10 x 25	17	100	6	204
1030CB	M10 x 30	17	100	6	192
1035CB	M10 x 35	17	50	12	384
1040CB	M10 x 40	17	50	11	352
1050CB	M10 x 50	17	50	9	288
1065CB	M10 x 65	17	50	9	288
1070CB	M10 x 70	17	50	8	240
1075CB	M10 x 75	17	50	8	256
1080CB	M10 x 80	17	50	6	192
1090CB	M10 x 90	17	25	8	240
10100CB	M10 x 100	17	25	9	288
10110CB	M10 x 110	17	25	9	288
10120CB	M10 x 120	17	25	10	320
10130CB	M10 x 130	17	25	10	320
10140CB	M10 x 140	17	25	8	320
10150CB	M10 x 150	17	25	6	192
10160CB	M10 x 160	17	25	6	192
10180CB	M10 x 180	17	25	6	192
10200CB	M10 x 200	17	10	10	320
10220CB	M10 x 220	17	10	10	320
10240CB	M10 x 240	17	10	10	320
10260CB	M10 x 260	17	10	10	320
10280CB	M10 x 280	17	10	9	288
10300CB	M10 x 300	17	10	9	288
1250CB	M12 x 50	19	25	8	240
1265CB	M12 x 65	19	25	9	288
1275CB	M12 x 75	19	25	9	288
1290CB	M12 x 90	19	25	6	192
12100CB	M12 x 100	19	25	6	192
12110CB	M12 x 110	19	25	6	192
12120CB	M12 x 120	19	10	10	320
12130CB	M12 x 130	19	10	10	320
12140CB	M12 x 140	19	10	10	320
12150CB	M12 x 150	19	10	10	320
12160CB	M12 x 160	19	10	10	320
12180CB	M12 x 180	19	10	10	320
12200CB	M12 x 200	19	10	10	320
12220CB	M12 x 220	19	10	10	320
12230CB	M12 x 230	19	10	10	320
12240CB	M12 x 240	19	10	6	192
12250CB	M12 x 250	19	10	6	192
12260CB	M12 x 260	19	10	6	192
12280CB	M12 x 280	19	10	6	192
12300CB	M12 x 300	19	10	6	192
16100CB	M16 x 100	24	10	9	288
16110CB	M16 x 110	24	10	9	288
16150CB	M16 x 150	24	10	6	192
16180CB	M16 x 180	24	5	10	320
16200CB	M16 x 200	24	5	10	320

TYPE - CAB

SUB TYPE - CAB01

# Exterior Carriage Bolts & Nuts



## Exterior Carriage Bolt

### Exterior (Green Organic)



Urban & industrial areas with a low salt atmosphere

A domed head bolt with a square anti-spin shoulder mainly used for clamping timber or attaching ironmongery to timber.

Coated with a patented multi-layer corrosion resistant plating to

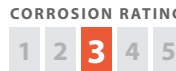
withstand 500 hours salt spray making it ideal for external applications.

Manufactured to DIN 603, DIN 934 and DIN 125-A.

Product Code	Size (mm)	Nut Socket Size (mm)	Pack Qty (pcs)	Carton Qty (packs)	Pallet Qty (packs)
<b>BAG</b>					
10100INCB	M10 x 100	17	10	10	1000
10150INCB	M10 x 150	17	10	6	600
10160INCB	M10 x 160	17	10	6	600
10200INCB	M10 x 200	17	10	6	600
10220INCB	M10 x 220	17	10	5	500

TYPE - IND SUB TYPE - INDO4

### Exterior (Silver Organic)



Urban & industrial areas with a low salt atmosphere

A domed head bolt with a square anti-spin shoulder mainly used for clamping timber or attaching ironmongery to timber.

Coated with a patented multi-layer corrosion resistant plating to

withstand 1,000 hours salt spray test making it ideal for external applications.

Supplied with hex nuts and form A washers.

Product Code	Size (mm)	Nut Socket Size (mm)	Pack Qty (pcs)	Carton Qty (packs)	Pallet Qty (packs)
<b>TIMBAG</b>					
0640CBI	M6 x 40	10	10	5	600
0650CBI	M6 x 50	10	10	5	600
0675CBI	M6 x 75	10	10	5	600
06100CBI	M6 x 100	10	10	5	600
0850CBI	M8 x 50	13	10	5	600
0875CBI	M8 x 75	13	10	5	600
08100CBI	M8 x 100	13	10	5	600
08110CBI	M8 x 110	13	10	5	600
08130CBI	M8 x 130	13	10	5	400
08150CBI	M8 x 150	13	10	5	400
1075CBI	M10 x 75	17	10	5	600
10100CBI	M10 x 100	17	10	5	600
10120CBI	M10 x 120	17	10	5	400
10130CBI	M10 x 130	17	10	5	400
10150CBI	M10 x 150	17	10	5	400
10180CBI	M10 x 180	17	10	5	400
1275CBI	M12 x 75	19	10	5	600
12100CBI	M12 x 100	19	10	5	400
12130CBI	M12 x 130	19	10	5	400

TYPE - CAB SUB TYPE - CAB05

## HDG Carriage Bolt

### Hot Dipped Galvanised



Urban and industrial areas with a moderate salt atmosphere

A domed head bolt with a square anti-spin shoulder mainly used for clamping timber or attaching ironmongery to timber.

NOTE: Fully threaded up to and including 150mm. Partially

threaded thereafter. Nut included.

Manufactured to DIN 603 and DIN 934

Product Code	Size (mm)	Nut Socket Size (mm)	Pack Qty (pcs)	Carton Qty (packs)	Pallet Qty (packs)
<b>BOX</b>					
0850CBG	M8 x 50	13	100	9	288
0875CBG	M8 x 75	13	50	9	288
08130CBG	M8 x 130	13	50	6	288
08150CBG	M8 x 150	13	25	10	192
1075CBG	M10 x 75	17	50	8	320
10100CBG	M10 x 100	17	25	9	256
10110CBG	M10 x 110	17	25	9	288
10130CBG	M10 x 130	17	25	10	288
10150CBG	M10 x 150	17	25	6	320
10180CBG	M10 x 180	17	25	6	192
10200CBG	M10 x 200	17	10	10	192
1275CBG	M12 x 75	19	25	9	320
12100CBG	M12 x 100	19	25	6	288
12110CBG	M12 x 110	19	25	6	192
12130CBG	M12 x 130	19	10	10	192
12150CBG	M12 x 150	19	10	10	320
12180CBG	M12 x 180	19	10	10	320
12200CBG	M12 x 200	19	10	10	320

TYPE - CAB SUB TYPE - CAB02

## HDG Square Plate Washer



Provides a large clamping surface and therefore spreading the load of a fastening.

### Box HDG

Product Code	Size Hole Ø x L x W x D (mm)	Pack Qty (pcs)	Carton Qty (Packs)	Pallet Qty (packs)
<b>BOX</b>				
WS10503G	M10 x 50 x 50 x 3	100	4	128
WS12503G	M12 x 50 x 50 x 3	100	4	128

TYPE - WSH SUB TYPE - WSH05

# Zinc Plated Roofing Bolt & Square Nut



## Roofing Bolt & Square Nut - Zinc

### Zinc



Manufactured with a large flat head, making it ideal for clamping thin sheet metal, plastic and wood.



CROSS

Product Code	Size (mm)	Nut Size (mm)	Pack Qty (pcs)	Carton Qty (Packs)	Pallet Qty (packs)
<b>TIMBAG</b>					
0612RBB	M6 x 12	M6	150	5	870
0620RBB	M6 x 20	M6	140	5	870
0625RBB	M6 x 25	M6	130	5	870
0630RBB	M6 x 30	M6	120	5	600
0640RBB	M6 x 40	M6	110	5	600
0650RBB	M6 x 50	M6	90	5	600
0660RBB	M6 x 60	M6	80	5	600
0680RBB	M6 x 80	M6	70	5	600
<b>TIMPAC</b>					
0612RBP	M6 x 12	M6	14	5	-
0620RBP	M6 x 20	M6	12	5	-
0625RBP	M6 x 25	M6	10	5	-
0630RBP	M6 x 30	M6	10	5	-
0640RBP	M6 x 40	M6	8	5	-
0650RBP	M6 x 50	M6	8	5	-
0660RBP	M6 x 60	M6	6	5	-
0680RBP	M6 x 80	M6	4	5	-
06100RBP	M6 x 100	M6	2	5	-

TYPE - BAG/PAK

SUB TYPE - BAG14/PAK14

Product Code	Size (mm)	Nut Size (mm)	Pack Qty (pcs)	Carton Qty (Box)	Pallet Qty (packs)
<b>BOX</b>					
0512RB	M5 x 12	M5	200	18	768
0530RB	M5 x 30	M5	200	10	540
0608RB	M6 x 08	M6	200	18	384
0612RB	M6 x 12	M6	200	10	384
0616RB	M6 x 16	M6	200	10	384
0620RB	M6 x 20	M6	200	10	336
0625RB	M6 x 25	M6	100	18	768
0630RB	M6 x 30	M6	100	18	768
0635RB	M6 x 35	M6	100	10	540
0640RB	M6 x 40	M6	100	10	540
0650RB	M6 x 50	M6	100	10	540
0660RB	M6 x 60	M6	100	8	384
0670RB	M6 x 70	M6	100	8	384
0680RB	M6 x 80	M6	100	8	288
06100RB	M6 x 100	M6	100	8	216
0825RB	M8 x 25	M8	100	10	288
0830RB	M8 x 30	M8	100	10	288
0840RB	M8 x 40	M8	100	8	288
0850RB	M8 x 50	M8	100	8	288
0860RB	M8 x 60	M8	100	8	216
0880RB	M8 x 80	M8	50	8	384
08100RB	M8 x 100	M8	50	8	288
08120RB	M8 x 120	M8	50	8	144
08140RB	M8 x 140	M8	50	8	216
08160RB	M8 x 160	M8	50	6	192
08180RB	M8 x 180	M8	50	6	192
08200RB	M8 x 200	M8	50	6	192

TYPE - ROB

SUB TYPE - ROB01

# Zinc Plated Cable Tray Bolts

## Cable Tray Bolt & Flange Nut (DIN6923)

### Zinc



Specifically designed to provide a rapid and secure fixing when erecting cable trays. Flange nut prevents the nut from falling into the socket driver.



CROSS

Product Code	Size (mm)	Nut A/F (mm)	Pack Qty (pcs)	Carton Qty (Box)	Pallet Qty (packs)
<b>BOX</b>					
CTB612	M6 x 12	10	200	16	192
CTB616	M6 x 16	10	200	16	192
CTB620	M6 x 20	10	200	16	192
CTB625	M6 x 25	10	200	16	192

TYPE - ROB

SUB TYPE - ROB02

# Zinc Plated Threaded Bar

Also Available in Stainless Steel



## Grade 4.8 Threaded Bar (DIN975)

### Zinc



Commonly used with drop in anchors for suspending cable trays from ceilings or can be cut to a required length and used with chemical resin.

Product Code	Thread Ø x Length (mm)	Pack Qty (pcs)	Pallet Qty (pcs)
<b>300MM BUNDLE</b>			
06300TBZ	M6 x 300	55	1980
08300TBZ	M8 x 300	30	1080
10300TBZ	M10 x 300	18	648
12300TBZ	M12 x 300	12	432
16300TBZ	M16 x 300	7	252
<b>1000MM BUNDLE</b>			
06TBZ	M6 x 1000	10	-
08TBZ	M8 x 1000	10	-
10TBZ	M10 x 1000	10	-
12TBZ	M12 x 1000	10	-
16TBZ	M16 x 1000	10	-
20TBZ	M20 x 1000	10	-

TYPE - TBA

SUB TYPE - TBA01

## Grade 8.8 High Tensile Threaded Bar

### Zinc



Manufactured from grade 8.8 high tensile carbon steel. Commonly used with drop in anchors for suspending cable trays from ceilings or can be cut to a required length and used with chemical resin.

Product Code	Thread Ø x Length (mm)	Pack Qty (pcs)
<b>1000MM BUNDLE</b>		
06TBZHT	M6 x 1000	10
08TBZHT	M8 x 1000	10
10TBZHT	M10 x 1000	10
12TBZHT	M12 x 1000	10
16TBZHT	M16 x 1000	10
20TBZHT	M20 x 1000	10

TYPE - TBA

SUB TYPE - TBA02

## Zinc Plated Set Screws

Also Available in Stainless Steel



ZINC PLATED (CR3) AND PASSIVATED

### Grade 8.8 Set Screw (DIN933)

Zinc



HEX

A fully metric threaded bolt used in a wide variety of applications.

**Nut not included.**

Product Code	Size (mm)	Socket Size (mm)	Pack Qty (pcs)	Carton Qty (packs)	Pallet Qty (packs)
<b>BOX</b>					
S612Z	M6 x 12	10	500	10	360
S616Z	M6 x 16	10	500	8	288
S620Z	M6 x 20	10	500	6	216
S625Z	M6 x 25	10	500	6	216
S630Z	M6 x 30	10	500	6	216
S635Z	M6 x 35	10	500	4	144
S640Z	M6 x 40	10	200	10	360
S650Z	M6 x 50	10	200	8	288
S816Z	M8 x 16	13	200	10	360
S820Z	M8 x 20	13	200	8	288
S825Z	M8 x 25	13	200	8	288
S830Z	M8 x 30	13	200	6	216
S835Z	M8 x 35	13	200	6	216
S840Z	M8 x 40	13	200	6	216
S850Z	M8 x 50	13	200	4	144
S860Z	M8 x 60	13	200	4	144
S870Z	M8 x 70	13	200	3	108
S880Z	M8 x 80	13	200	3	108
S8100Z	M8 x 100	13	100	6	216
S1020Z	M10 x 20	17	200	6	144
S1025Z	M10 x 25	17	200	4	144
S1030Z	M10 x 30	17	200	4	144
S1035Z	M10 x 35	17	100	8	288
S1040Z	M10 x 40	17	100	6	216
S1050Z	M10 x 50	17	100	6	216
S1060Z	M10 x 60	17	100	4	144
S1070Z	M10 x 70	17	100	4	144
S1075Z	M10 x 75	17	100	4	144
S1080Z	M10 x 80	17	100	4	144
S10100Z	M10 x 100	17	50	6	216
S1225Z	M12 x 25	19	100	6	216
S1230Z	M12 x 30	19	100	6	216
S1235Z	M12 x 35	19	100	6	216
S1240Z	M12 x 40	19	100	4	144
S1245Z	M12 x 45	19	100	4	144
S1250Z	M12 x 50	19	100	4	144
S1260Z	M12 x 60	19	100	3	108
S1270Z	M12 x 70	19	50	6	216
S1275Z	M12 x 75	19	50	6	216
S1280Z	M12 x 80	19	50	6	216
S12100Z	M12 x 100	19	50	4	144
S12120Z	M12 x 120	19	50	4	144
S1625Z	M16 x 25	24	50	6	216
S1630Z	M16 x 30	24	50	6	216
S1635Z	M16 x 35	24	50	6	216
S1640Z	M16 x 40	24	50	4	144
S1645Z	M16 x 45	24	50	4	144
S1650Z	M16 x 50	24	50	4	144
S1655Z	M16 x 55	24	50	4	144
S1660Z	M16 x 60	24	50	4	108
S1665Z	M16 x 65	24	25	6	288
S1670Z	M16 x 70	24	25	6	216
S1675Z	M16 x 75	24	25	6	216
S1680Z	M16 x 80	24	25	6	216
S16100Z	M16 x 100	24	25	4	144
S2040Z	M20 x 40	30	25	6	216
S2045Z	M20 x 45	30	25	6	216
S2050Z	M20 x 50	30	25	4	144
S2055Z	M20 x 55	30	25	4	144
S2060Z	M20 x 60	30	25	4	144
S2065Z	M20 x 65	30	25	4	144
S2070Z	M20 x 70	30	25	4	144
S2075Z	M20 x 75	30	25	3	144
S2080Z	M20 x 80	30	25	3	108
S2090Z	M20 x 90	30	20	4	144
S20100Z	M20 x 100	30	20	4	144

TYPE - 9333

SUB TYPE - 93301

### Grade 8.8 Set Screw (DIN933) & Nut (DIN934)

Zinc



HEX

A fully metric threaded bolt used in a wide variety of applications.

Product Code	Size (mm)	Socket Size (mm)	Pack Qty (pcs)	Carton Qty (packs)	Pallet Qty (packs)
<b>TIMBAG</b>					
616SNZB	M6 x 16	10	130	5	870
620SNZB	M6 x 20	10	115	5	870
625SNZB	M6 x 25	10	100	5	870
630SNZB	M6 x 30	10	140	5	600
650SNZB	M6 x 50	10	70	5	870
820SNZB	M8 x 20	13	60	5	870
825SNZB	M8 x 25	13	55	5	870
840SNZB	M8 x 40	13	45	5	870
850SNZB	M8 x 50	13	40	5	870
870SNZB	M8 x 70	13	30	5	870
880SNZB	M8 x 80	13	25	5	600
8100SNZB	M8 x 100	13	20	5	600
1025SNZB	M10 x 25	17	35	5	870
1030SNZB	M10 x 30	17	32	5	725
1040SNZB	M10 x 40	17	28	5	725
1050SNZB	M10 x 50	17	25	5	725
1070SNZB	M10 x 70	17	20	5	600
1080SNZB	M10 x 80	17	15	5	600
10100SNZB	M10 x 100	17	16	5	600
1225SNZB	M12 x 25	19	25	5	870
1230SNZB	M12 x 30	19	23	5	870
1235SNZB	M12 x 35	19	22	5	870
1240SNZB	M12 x 40	19	20	5	870
1250SNZB	M12 x 50	19	18	5	870
1270SNZB	M12 x 70	19	14	5	870
1280SNZB	M12 x 80	19	10	5	600
12100SNZB	M12 x 100	19	10	5	600
12120SNZB	M12 x 120	19	8	5	600
<b>TIMPAC</b>					
612SNZP	M6 x 12	10	8	10	-
616SNZP	M6 x 16	10	8	10	-
620SNZP	M6 x 20	10	8	10	-
625SNZP	M6 x 25	10	6	10	-
630SNZP	M6 x 30	10	4	10	-
650SNZP	M6 x 50	10	4	10	-
820SNZP	M8 x 20	13	6	10	-
825SNZP	M8 x 25	13	4	10	-
830SNZP	M8 x 30	13	4	10	-
840SNZP	M8 x 40	13	2	10	-
850SNZP	M8 x 50	13	2	10	-
870SNZP	M8 x 70	13	2	10	-
880SNZP	M8 x 80	13	2	10	-
8100SNZP	M8 x 100	13	2	10	-
1025SNZP	M10 x 25	17	2	10	-
1030SNZP	M10 x 30	17	2	10	-
1040SNZP	M10 x 40	17	2	10	-
1050SNZP	M10 x 50	17	2	10	-
1070SNZP	M10 x 70	17	2	10	-
1080SNZP	M10 x 80	17	2	10	-
10100SNZP	M10 x 100	17	2	10	-
1225SNZP	M12 x 25	19	2	10	-
1230SNZP	M12 x 30	19	2	10	-
1235SNZP	M12 x 35	19	2	10	-
1240SNZP	M12 x 40	19	2	10	-
1250SNZP	M12 x 50	19	2	10	-
1270SNZP	M12 x 70	19	2	10	-
1280SNZP	M12 x 80	19	2	10	-
12100SNZP	M12 x 100	19	2	10	-
12120SNZP	M12 x 120	19	2	10	-

TYPE - BAG/PAK

SUB TYPE - BAG16/PAK16

## Zinc Plated Nuts

Also Available in Stainless Steel



ZINC PLATED (CR3) AND PASSIVATED

### Hex Full Nut (DIN934)

#### Zinc



A traditional nut used for all bolting and fastening applications.

\* Please note boxed are Class 8 to DIN 267-4

Product Code	Size (mm)	Height (mm)	Socket Size (mm)	Pack Qty (pcs)	Carton Qty (packs)	Pallet Qty (packs)
--------------	-----------	-------------	------------------	----------------	--------------------	--------------------

#### BULK BOX

NH6ZBULK	M6	5.0	10	-	10	-
NH8ZBULK	M8	6.5	13	-	10	-
NH10ZBULK	M10	8.0	17	-	10	-
NH12ZBULK	M12	10.0	19	-	10	-
NH16ZBULK	M16	13.0	24	-	10	-
NH20ZBULK	M20	16.0	30	-	10	-

#### BOX\*

NH4Z	M4	3.2	7	1,500	20	960
NH5Z	M5	4.0	8	1,000	20	960
NH6Z	M6	5.0	10	500	20	960
NH8Z	M8	6.5	13	200	20	960
NH10Z	M10	8.0	17	100	20	960
NH12Z	M12	10.0	19	100	12	576
NH16Z	M16	13.0	24	100	6	288
NH20Z	M20	16.0	30	50	6	288

#### TIMBAG

6HNUTZB	M6	5	10	600	5	725
8HNUTZB	M8	6.5	13	300	5	725
10HNUTZB	M10	8	17	130	5	870
12HNUTZB	M12	10	19	90	5	725
16HNUTZB	M16	13	24	45	5	725
20HNUTZB	M20	16	30	20	5	870

#### TIMPAC

6HNUTZP	M6	5	10	40	10	-
8HNUTZP	M8	6.5	13	30	10	-
10HNUTZP	M10	8	17	20	10	-
12HNUTZP	M12	10	19	10	10	-
16HNUTZP	M16	13	24	4	10	-
20HNUTZP	M20	16	30	2	10	-

TYPE - 934/BAG/PAK

SUB TYPE - 93401/BAG17/PAK17

### Nylon Nut - Type T (DIN985)

#### Zinc



Type T hexagonal nylon nut with a metric thread. Sometimes known as a 'thin nut'.

Product Code	Size (mm)	Height (mm)	Socket Size (mm)	Pack Qty (pcs)	Carton Qty (packs)	Pallet Qty (packs)
--------------	-----------	-------------	------------------	----------------	--------------------	--------------------

#### BULK BOX

NT6ZBULK	M6	6	10	-	10	-
NT8ZBULK	M8	8	13	-	10	-

#### BOX

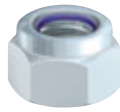
NT6Z	M6	6	10	500	16	768
NT8Z	M8	8	13	200	20	960
NT10Z	M10	10	17	100	16	768
NT12Z	M12	12	19	100	10	480
NT16Z	M16	16	24	100	6	288

TYPE - NYN

SUB TYPE - NYN01

### Nylon Nut - Type P (DIN982)

#### Zinc



Also known as locking nuts, designed to prevent the nut from loosening.

Product Code	Size (mm)	Height (mm)	Socket Size (mm)	Pack Qty (pcs)	Carton Qty (packs)	Pallet Qty (packs)
--------------	-----------	-------------	------------------	----------------	--------------------	--------------------

#### BULK BOX

NP6ZBULK	M6	8.0	10	-	10	-
NP8ZBULK	M8	9.5	13	-	10	-

#### BOX

NP6Z	M6	8.0	10	500	12	576
NP8Z	M8	9.5	13	200	12	768
NP10Z	M10	11.5	17	100	12	576
NP12Z	M12	14.0	19	100	8	384
NP16Z	M16	18.0	24	100	4	192

#### TIMBAG

6NPB	M6	8.0	10	300	5	600
8NPB	M8	9.5	13	300	5	600
10NPB	M10	11.5	17	130	5	600
12NPB	M12	14.0	19	90	5	600
16NPB	M16	18.0	24	45	5	600

#### TIMPAC

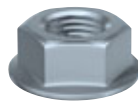
6NPP	M6	8.0	10	20	10	-
8NPP	M8	9.5	13	10	10	-
10NPP	M10	11.5	17	4	10	-
12NPP	M12	14.0	19	4	10	-
16NPP	M16	18.0	24	2	10	-

TYPE - NYN/BAG/PAK

SUB TYPE - NYN02/BAG18/PAK18

### Hex Serrated Flange Nut (DIN6923)

#### Zinc



Designed to provide a larger clamping and locking force than a standard hex nut.

Product Code	Size (mm)	Height (mm)	Socket Size (mm)	Pack Qty (pcs)	Carton Qty (packs)	Pallet Qty (packs)
--------------	-----------	-------------	------------------	----------------	--------------------	--------------------

#### BOX

NF6Z	M6	6	10	300	16	768
NF8Z	M8	8	13	200	16	576
NF10Z	M10	10	15	100	16	768
NF12Z	M12	12	18	100	8	384
NF16Z	M16	16	24	100	4	192
NF20Z	M20	20	30	50	4	192

TYPE - NUT

SUB TYPE - NUT01

### Hex Dome Nut (DIN1587)

#### Zinc



A hexagonal dome nut with a metric thread. Ideal for protective or aesthetic uses.

Product Code	Size (mm)	Height (mm)	Socket Size (mm)	Pack Qty (pcs)	Carton Qty (packs)	Pallet Qty (packs)
--------------	-----------	-------------	------------------	----------------	--------------------	--------------------

#### BOX

ND6Z	M6	12	10	200	20	960
ND8Z	M8	15	13	100	20	960
ND10Z	M10	18	17	100	8	384
ND12Z	M12	22	19	100	8	384
ND16Z	M16	28	24	100	4	192
ND20Z	M20	34	30	50	4	192

TYPE - NUT

SUB TYPE - NUT03

### Wing Nut

#### Zinc



A light duty nut that is regularly tightened and removed by hand.

Product Code	Size (mm)	Pack Qty (pcs)	Carton Qty (packs)	Pallet Qty (packs)
--------------	-----------	----------------	--------------------	--------------------

#### BOX

NW6Z	M6	300	12	-
NW8Z	M8	200	12	-
NW10Z	M10	100	12	-
NW12Z	M12	100	8	-
NW16Z	M16	50	4	-

#### PACK

NW6ZP	M6	6	10	-
NW8ZP	M8	4	10	-
NW10ZP	M10	2	10	-

TYPE - NUT/PAK

SUB TYPE - NUT02/PAK12

### Hex Connector Nut (DIN6334)

#### Zinc



For extending the length of threaded bar.

Product Code	Size (mm)	Height (mm)	Socket Size (mm)	Pack Qty (pcs)	Carton Qty (packs)	Pallet Qty (packs)
--------------	-----------	-------------	------------------	----------------	--------------------	--------------------

#### BOX

NC6Z	M6	18	10	200	12	576
NC8Z	M8	24	13	100	8	384
NC10Z	M10	30	17	100	4	192
NC12Z	M12	36	19	100	4	192
NC16Z	M16	48	24	50	4	192
NC20Z	M20	60	30	25	4	192

#### TIMPAC

NC8ZP	M8	24	13	4	10	-
NC10ZP	M10	30	17	2	10	-

TYPE - NUT/PAK

SUB TYPE - NUT04/PAK19

**New**

### Channel Nuts

#### Zinc

Channel nuts are used to secure standard metric threaded fasteners, such as threaded bar into framing channel or strut.



Without Spring

Short Spring

Long Spring

Product Code	Size (mm)	Pack Qty (pcs)	Carton Qty (packs)	Pallet Qty (packs)
--------------	-----------	----------------	--------------------	--------------------

#### BOX - WITHOUT SPRING

CN6Z	M6	100	6	-
CN8Z	M8	100	6	-
CN10Z	M10	100	6	-
CN12Z	M12	100	6	-

#### BOX - SHORT SPRING

CNSH6Z	M6	100	6	-
CNSH8Z	M8	100	6	-
CNSH10Z	M10	100	6	-
CNSH12Z	M12	100	6	-

#### BOX - LONG SPRING

CNLG6Z	M6	100	6	-
CNLG8Z	M8	100	6	-
CNLG10Z	M10	100	6	-
CNLG12Z	M12	100	6	-

TYPE - CHN

SUB TYPE - CHN01



# Zinc Plated Washers

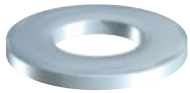
Also Available in Stainless Steel



ZINC PLATED (CR3) AND PASSIVATED

## Form A Washer (DIN125-A)

Zinc



A traditional and commonly used washer for clamping and spacing applications.

Product Code	Size x Outer Ø (mm)	Thickness (mm)	Pack Qty (pcs)	Carton Qty (Packs)	Pallet Qty (packs)
--------------	---------------------	----------------	----------------	--------------------	--------------------

**BULK BOX**

WA6ZBULK	M6 x 12.5	1.6	20,000	10	-
WA8ZBULK	M8 x 17	1.6	10,000	10	-
WA10ZBULK	M10 x 21	2.0	5,000	10	-
WA12ZBULK	M12 x 24	2.5	2,500	10	-
WA16ZBULK	M16 x 30	3.0	2,000	10	-

**BOX**

WA4Z	M4 x 9	0.8	1,250	40	1920
WA5Z	M5 x 10	1	1,000	32	1536
WA6Z	M6 x 12.5	1.6	500	32	1536
WA8Z	M8 x 17	1.6	200	32	2048
WA10Z	M10 x 21	2	100	32	2048
WA12Z	M12 x 24	2.5	100	20	1280
WA14Z	M14 x 24	2.5	100	16	768
WA16Z	M16 x 30	3	100	8	512
WA20Z	M20 x 37	3	100	8	512
WA24Z	M24 x 44	4	100	4	256

**TIMBAG**

6WHAZB	M6 x 12.5	1.6	500	5	870
8WHAZB	M8 x 17	1.6	350	5	870
10WHAZB	M10 x 21	2	200	5	870
12WHAZB	M12 x 24	2.5	130	5	870
16WHAZB	M16 x 30	3	75	5	870
20WHAZB	M20 x 37	3	50	5	870

**TIMPAC**

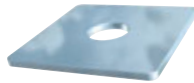
6WHAZP	M6 x 12.5	1.6	60	10	-
8WHAZP	M8 x 17	1.6	30	10	-
10WHAZP	M10 x 21	2	20	10	-
12WHAZP	M12 x 24	2.5	15	10	-
16WHAZP	M16 x 30	3	8	10	-
20WHAZP	M20 x 37	3	4	10	-

TYPE - WSH/BAG/PAK

SUB TYPE - WSH01/BAG19/PAK21

## Square Plate Washer

Zinc



Provides a large clamping surface and therefore spreading the load of a fastening.

Product Code	Size Hole Ø x L x W x D (mm)	Pack Qty (pcs)	Carton Qty (Packs)	Pallet Qty (packs)
--------------	------------------------------	----------------	--------------------	--------------------

**BOX**

WS8403Z	M8 x 40 x 40 x 3	100	6	192
WS8405Z	M8 x 40 x 40 x 5	100	4	128
WS10403Z	M10 x 40 x 40 x 3	150	4	128
WS10405Z	M10 x 40 x 40 x 5	100	4	128
WS10503Z	M10 x 50 x 50 x 3	100	4	128
WS12503Z	M12 x 50 x 50 x 3	100	4	128
WS16503Z	M16 x 50 x 50 x 3	100	4	128

**TIMBAG**

1050WHSPZB	M10 x 50 x 50 x 3	30	5	725
1250WHSPZB	M12 x 50 x 50 x 3	30	5	725
1650WHSPZB	M16 x 50 x 50 x 3	30	5	600

**TIMPAC**

1050WHSPZP	M10 x 50 x 50 x 3	2	10	-
1250WHSPZP	M12 x 50 x 50 x 3	2	10	-
1650WHSPZP	M16 x 50 x 50 x 3	2	10	-

TYPE - WSH/BAG/PAK

SUB TYPE - WSH05/BAG21/PAK24

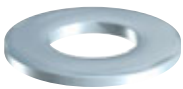
**Hot Dipped Galvanised**

**Now Available**

Page 54

## Form B Washer (DIN125-B)

Zinc



Thinner than a form A, used for clamping and spacing applications.

Product Code	Size x Outer Ø (mm)	Thickness (mm)	Pack Qty (pcs)	Carton Qty (Packs)	Pallet Qty (packs)
--------------	---------------------	----------------	----------------	--------------------	--------------------

**BULK BOX**

WB6ZBULK	M6 x 12	0.8	32,000	10	-
WB8ZBULK	M8 x 17	1	15,000	10	-
WB10ZBULK	M10 x 21	1.25	6,000	10	-
WB12ZBULK	M12 x 24	1.6	5,000	10	-

**BOX**

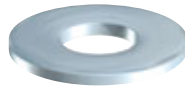
WB6Z	M6 x 12	0.8	500	40	2560
WB8Z	M8 x 17	1	200	40	2560
WB10Z	M10 x 21	1.25	100	40	2560
WB12Z	M12 x 24	1.6	100	32	2048
WB16Z	M16 x 30	2	100	16	1024
WB20Z	M20 x 37	2	100	16	768

TYPE - WSH

SUB TYPE - WSH02

## Form C Washer (BS4320)

Zinc



A wider outer diameter than the Form A & B. Used to increase the clamping area.

Product Code	Size x Outer Ø (mm)	Thickness (mm)	Pack Qty (pcs)	Carton Qty (Packs)	Pallet Qty (packs)
--------------	---------------------	----------------	----------------	--------------------	--------------------

**BULK BOX**

WC6ZBULK	M6 x 14	1.6	12,000	10	-
WC8ZBULK	M8 x 21	1.6	5,000	10	-
WC10ZBULK	M10 x 24	2	3,000	10	-
WC12ZBULK	M12 x 28	2.5	2,000	10	-

**BOX**

WC6Z	M6 x 14	1.6	500	16	1024
WC8Z	M8 x 21	1.6	200	20	960
WC10Z	M10 x 24	2	100	32	1536
WC12Z	M12 x 28	2.5	100	16	768
WC16Z	M16 x 34	3	100	8	512
WC20Z	M20 x 39	4	100	8	512

TYPE - WSH

SUB TYPE - WSH03

## Penny/Repair Washer (DIN 9054)

Zinc



A large diameter washer ideal for spreading the clamping load, reducing a hole dia and packing out. Sometimes known as a "mudguard" washer.

Product Code	Size x Outer Ø (mm)	Thickness (mm)	Pack Qty (pcs)	Carton Qty (Packs)	Pallet Qty (packs)
--------------	---------------------	----------------	----------------	--------------------	--------------------

**BULK BOX**

WP620ZBULK	M6 x 20	1.5	5,000	10	-
WP625ZBULK	M6 x 25	1.5	3,500	10	-
WP630ZBULK	M6 x 30	1.5	2,500	10	-
WP640ZBULK	M6 x 40	1.5	1,700	10	-
WP825ZBULK	M8 x 25	1.5	3,500	10	-
WP840ZBULK	M8 x 40	1.5	1,700	10	-
WP1025ZBULK	M10 x 25	1.5	3,500	10	-
WP1040ZBULK	M10 x 40	1.5	1,700	10	-
WP1240ZBULK	M12 x 40	1.5	1,700	10	-

**BOX**

WP525Z	M5 x 25	1.5	100	32	1536
WP620Z	M6 x 20	1.5	100	32	2048
WP625Z	M6 x 25	1.5	100	32	1536
WP630Z	M6 x 30	1.5	100	20	960
WP640Z	M6 x 40	1.5	100	16	768
WP825Z	M8 x 25	1.5	100	32	1536
WP830Z	M8 x 30	1.5	100	20	960
WP840Z	M8 x 40	1.5	100	16	768
WP1025Z	M10 x 25	1.5	100	32	1536
WP1030Z	M10 x 30	1.5	100	20	960
WP1040Z	M10 x 40	1.5	100	16	768
WP1240Z	M12 x 40	1.5	100	16	768

**TIMBAG**

625WHPZB	M6 x 25	1.5	160	5	870
825WHPZB	M8 x 25	1.5	160	5	870
840WHPZB	M8 x 40	1.5	60	5	600
1040WHPZB	M10 x 40	1.5	60	5	870
1240WHPZB	M12 x 40	1.5	50	5	870

**TIMPAC**

620WHPZP	M6 x 20	1.5	10	10	-
625WHPZP	M6 x 25	1.5	10	10	-
630WHPZP	M6 x 30	1.5	8	10	-
640WHPZP	M6 x 40	1.5	4	10	-
825WHPZP	M8 x 25	1.5	8	10	-
840WHPZP	M8 x 40	1.5	4	10	-
1040WHPZP	M10 x 40	1.5	4	10	-

TYPE - WSH/BAG/PAK

SUB TYPE - WSH04/BAG20/PAK22

## Spring Washer (DIN 7980)

Zinc



Designed to prevent the nut from loosening.

Product Code	Size (mm)	Pack Qty (pcs)	Carton Qty (Packs)	Pallet Qty (packs)
--------------	-----------	----------------	--------------------	--------------------

**BOX**

WSP6Z	M6	500	40	2560
WSP8Z	M8	250	40	2560
WSP10Z	M10	200	20	1280
WSP12Z	M12	200	16	1024
WSP16Z	M16	100	16	1024

**TIMPAC**

WSP6ZP	M6	30	10	-
WSP8ZP	M8	20	10	-
WSP10ZP	M10	10	10	-
WSP12ZP	M12	8	10	-

TYPE - WSH/PAK

SUB TYPE - WSH06/PAK23

# Stainless Steel Fasteners

## Superior Corrosion Resistance

A2 Stainless steel offers an excellent resistance to corrosion which makes it perfect for many day to day external and corrosive applications.



### SUSTAINABLE STAINLESS STEEL

Stainless steel is regarded as one of the most sustainable metals on the planet.

## Stainless Steel Carriage Bolts

**Superior Corrosion Resistance**



**SUSTAINABLE STAINLESS STEEL**

### Carriage Bolt (DIN603)

A2 Austenitic Stainless Steel



DOMED

A cup square carriage bolt in A2 stainless steel. A full metric fine thread.  
**Nut not included.**

Product Code	Size (mm)	Pack Qty (pcs)	Carton Qty (packs)	Pallet Qty (packs)
<b>BOX</b>				
0625CBSS	M6 x 25	200	8	
0630CBSS	M6 x 30	200	8	
0640CBSS	M6 x 40	200	6	
0650CBSS	M6 x 50	200	5	
0675CBSS	M6 x 75	50	10	
06100CBSS	M6 x 100	50	10	
0875CBSS	M8 x 75	50	8	
0880CBSS	M8 x 80	50	8	
08130CBSS	M8 x 130	25	6	
08150CBSS	M8 x 150	25	6	
1075CBSS	M10 x 75	50	6	
10110CBSS	M10 x 110	25	10	
10120CBSS	M10 x 120	25	8	
10130CBSS	M10 x 130	25	8	
1275CBSS	M12 x 75	50	5	
12100CBSS	M12 x 100	50	3	
12110CBSS	M12 x 110	25	6	

TYPE - CAS

SUB TYPE - CA501

### Carriage Bolt (DIN603)

A2 Austenitic Stainless Steel



DOMED

A cup square carriage bolt in A2 stainless steel. A full metric fine thread.  
**Nut not included.**

Product Code	Size (mm)	Pack Qty (pcs)	Carton Qty (packs)
<b>SMALL BAG</b>			
0625CBSSX	M6 x 25	10	200
0630CBSSX	M6 x 30	10	100
0640CBSSX	M6 x 40	10	100
0650CBSSX	M6 x 50	10	100
0675CBSSX	M6 x 75	10	50
06100CBSSX	M6 x 100	10	50
0840CBSSX	M8 x 40	10	100
0850CBSSX	M8 x 50	5	100
0860CBSSX	M8 x 60	5	100
0875CBSSX	M8 x 75	5	100
0880CBSSX	M8 x 80	5	100
08100CBSSX	M8 x 100	5	50
08130CBSSX	M8 x 130	5	50
08150CBSSX	M8 x 150	5	50
1075CBSSX	M10 x 75	5	50
1090CBSSX	M10 x 90	5	50
10100CBSSX	M10 x 100	5	50
10110CBSSX	M10 x 110	5	50
10120CBSSX	M10 x 120	5	50
10130CBSSX	M10 x 130	5	50
10150CBSSX	M10 x 150	5	30
1275CBSSX	M12 x 75	5	50
12100CBSSX	M12 x 100	5	30
12110CBSSX	M12 x 110	5	30
12130CBSSX	M12 x 130	5	30

TYPE - SSB

SUB TYPE - SSB05

### Carriage Bolt (DIN603) & Nut (DIN934)

A2 Austenitic Stainless Steel



DOMED

A cup square carriage bolt in A2 stainless steel. A full metric fine thread.

Product Code	Size (mm)	Nut A/F (mm)	Pack Qty (pcs)	Carton Qty (packs)
<b>TIMPAC</b>				
08100CBSSP	M8 x 100	13	4	5
08130CBSSP	M8 x 130	13	3	5
08150CBSSP	M8 x 150	17	2	5
1075CBSSP	M10 x 75	17	3	5
10100CBSSP	M10 x 100	17	2	5
10120CBSSP	M10 x 120	17	2	5
10130CBSSP	M10 x 130	17	2	5
10150CBSSP	M10 x 150	13	2	5
12100CBSSP	M12 x 100	19	2	5
12130CBSSP	M12 x 130	19	2	5

TYPE - PAK

SUB TYPE - PAK25

# Stainless Steel Socket Screws

**Superior  
Corrosion  
Resistance**



**SUSTAINABLE  
STAINLESS STEEL**

## Countersunk Socket (DIN7991)

A2 Austenitic Stainless Steel



Designed for use in applications where the head is flush with joining parts.

INTER. HEX

Product Code	Size (mm)	Hex Recess (mm)	Pack Qty (pcs)	Carton Qty (packs)	Pallet Qty (packs)
<b>BOX</b>					
616CSKSS	M6 x 16	5.0	500	10	360
620CSKSS	M6 x 20	5.0	200	20	720
625CSKSS	M6 x 25	5.0	200	16	576
825CSKSS	M8 x 25	6.0	100	20	720
830CSKSS	M8 x 30	6.0	100	14	504
<b>SMALL BAG</b>					
616CSKSSX	M6 x 16	5.0	10	200	-
620CSKSSX	M6 x 20	5.0	10	200	-
625CSKSSX	M6 x 25	5.0	10	200	-
825CSKSSX	M8 x 25	6.0	10	200	-
830CSKSSX	M8 x 30	6.0	10	100	-

TYPE - SOS/SSB SUB TYPE - SOS01/SSB04

## Button Socket (ISO7380)

A2 Austenitic Stainless Steel



Designed for applications that allow the head to protrude above the joining parts. Button head protects adjoining parts from scrapes or other damage.

INTER. HEX

Product Code	Size (mm)	Hex Recess (mm)	Pack Qty (pcs)	Carton Qty (packs)	Pallet Qty (packs)
<b>BOX</b>					
612BUTSS	M6 x 12	5.0	500	12	432
616BUTSS	M6 x 16	5.0	500	10	360
620BUTSS	M6 x 20	5.0	500	6	216
625BUTSS	M6 x 25	5.0	200	14	504
630BUTSS	M6 x 30	5.0	200	14	504
825BUTSS	M8 x 25	6.0	100	16	576
<b>SMALL BAG</b>					
612BUTSSX	M6 x 12	5.0	10	500	-
616BUTSSX	M6 x 16	5.0	10	500	-
620BUTSSX	M6 x 20	5.0	10	300	-
625BUTSSX	M6 x 25	5.0	10	200	-
630BUTSSX	M6 x 30	5.0	10	200	-
825BUTSSX	M8 x 25	6.0	10	100	-

TYPE - SOS/SSB SUB TYPE - SOS01/SSB04

## Cap Socket (DIN912)

A2 Austenitic Stainless Steel



Socket head cap screws are designed to be used with the head protruding.

INTER. HEX

Product Code	Size (mm)	Hex Recess (mm)	Pack Qty (pcs)	Carton Qty (packs)	Pallet Qty (packs)
<b>BOX</b>					
516CAPSS	M5 x 16	4.0	500	10	360
520CAPSS	M5 x 20	4.0	500	12	432
616CAPSS	M6 x 16	5.0	200	20	720
620CAPSS	M6 x 20	5.0	200	16	544
625CAPSS	M6 x 25	5.0	200	14	504
820CAPSS	M8 x 20	6.0	200	8	288
825CAPSS	M8 x 25	6.0	200	7	252
<b>SMALL BAG</b>					
516CAPSSX	M5 x 16	4.0	10	100	-
520CAPSSX	M5 x 20	4.0	10	500	-
616CAPSSX	M6 x 16	5.0	10	500	-
620CAPSSX	M6 x 20	5.0	10	200	-
625CAPSSX	M6 x 25	5.0	10	200	-
820CAPSSX	M8 x 20	6.0	10	100	-
825CAPSSX	M8 x 25	6.0	10	100	-

TYPE - SOS/SSB SUB TYPE - SOS01/SSB04

## Countersunk Socket (DIN7991) & Nut (DIN934)

A2 Austenitic Stainless Steel



Designed for use in applications where the head is flush with joining parts.

INTER. HEX

Product Code	Size (mm)	Hex Recess (mm)	Pack Qty (pcs)	Carton Qty (packs)
<b>TIMPAC</b>				
616CSKSSP	M6 x 16	5.0	8	10
620CSKSSP	M6 x 20	5.0	8	10
625CSKSSP	M6 x 25	5.0	6	10
825CSKSSP	M8 x 25	6.0	4	10
830CSKSSP	M8 x 30	6.0	4	10

TYPE - PAK SUB TYPE - PAK27

## Button Socket (ISO7380) & Nut (DIN934)

A2 Austenitic Stainless Steel



Designed for applications that allow the head to protrude above the joining parts. Button head protects adjoining parts from scrapes or other damage.

INTER. HEX

Product Code	Size (mm)	Hex Recess (mm)	Pack Qty (pcs)	Carton Qty (packs)
<b>TIMPAC</b>				
612BUTSSP	M6 x 12	5.0	8	10
616BUTSSP	M6 x 16	5.0	8	10
620BUTSSP	M6 x 20	5.0	8	10
625BUTSSP	M6 x 25	5.0	6	10
630BUTSSP	M6 x 30	5.0	4	10
825BUTSSP	M8 x 25	6.0	4	10

TYPE - PAK SUB TYPE - PAK27

## Cap Socket (DIN912) & Nut (DIN934)

A2 Austenitic Stainless Steel



Socket head cap screws are designed to be used with the head protruding.

INTER. HEX

Product Code	Size (mm)	Hex Recess (mm)	Pack Qty (pcs)	Carton Qty (packs)
<b>TIMPAC</b>				
516CAPSSP	M5 x 16	4.0	8	10
520CAPSSP	M5 x 20	4.0	8	10
616CAPSSP	M6 x 16	5.0	8	10
620CAPSSP	M6 x 20	5.0	8	10
625CAPSSP	M6 x 25	5.0	6	10
820CAPSSP	M8 x 20	6.0	4	10
825CAPSSP	M8 x 25	6.0	4	10

TYPE - PAK SUB TYPE - PAK27



# Stainless Steel Set Screws

**Superior Corrosion Resistance**



SUSTAINABLE STAINLESS STEEL

## Set Screw (DIN933)

A2 Austenitic Stainless Steel



A fully metric threaded bolt used in a wide variety of applications.

**Nut not included.**

HEX

Product Code	Size (mm)	Socket Size (mm)	Pack Qty (pcs)	Carton Qty (packs)	Pallet Qty (packs)
<b>BOX</b>					
S616SS	M6 x 16	10	200	20	720
S620SS	M6 x 20	10	200	16	576
S625SS	M6 x 25	10	200	14	504
S630SS	M6 x 30	10	200	14	504
S640SS	M6 x 40	10	200	10	360
S650SS	M6 x 50	10	200	8	288
S820SS	M8 x 20	13	200	10	360
S825SS	M8 x 25	13	200	7	252
S830SS	M8 x 30	13	100	14	504
S835SS	M8 x 35	13	100	14	504
S840SS	M8 x 40	13	100	12	432
S850SS	M8 x 50	13	100	8	288
S860SS	M8 x 60	13	100	7	252
S880SS	M8 x 80	13	50	10	360
S8100SS	M8 x 100	13	50	8	288
S1020SS	M10 x 20	17	100	10	360
S1025SS	M10 x 25	17	100	10	360
S1030SS	M10 x 30	17	100	8	288
S1035SS	M10 x 35	17	100	8	288
S1040SS	M10 x 40	17	100	6	252
S1050SS	M10 x 50	17	50	12	432
S1060SS	M10 x 60	17	50	8	288
S1070SS	M10 x 70	17	50	8	288
S1230SS	M12 x 30	19	50	10	360
S1240SS	M12 x 40	19	50	8	288
S1250SS	M12 x 50	19	50	8	288
S1260SS	M12 x 60	19	50	7	252

TYPE - SSS

SUB TYPE - SSS01

## Set Screw (DIN933)

A2 Austenitic Stainless Steel



A fully metric threaded bolt used in a wide variety of applications.

**Nut not included.**

HEX

Product Code	Size (mm)	Socket Size (mm)	Pack Qty (pcs)	Carton Qty (packs)
<b>SMALL BAG</b>				
S616SSX	M6 x 16	10	10	200
S620SSX	M6 x 20	10	10	200
S625SSX	M6 x 25	10	10	200
S630SSX	M6 x 30	10	10	200
S640SSX	M6 x 40	10	10	100
S650SSX	M6 x 50	10	10	200
S820SSX	M8 x 20	13	10	200
S825SSX	M8 x 25	13	10	100
S830SSX	M8 x 30	13	10	100
S835SSX	M8 x 35	13	10	100
S840SSX	M8 x 40	13	10	100
S850SSX	M8 x 50	13	5	100
S860SSX	M8 x 60	13	5	100
S880SSX	M8 x 80	13	5	100
S8100SSX	M8 x 100	13	5	50
S1020SSX	M10 x 20	17	10	100
S1025SSX	M10 x 25	17	10	100
S1030SSX	M10 x 30	17	10	50
S1035SSX	M10 x 35	17	10	50
S1040SSX	M10 x 40	17	10	50
S1050SSX	M10 x 50	17	5	100
S1060SSX	M10 x 60	17	5	50
S1070SSX	M10 x 70	17	5	50
S1080SSX	M10 x 80	17	5	50
S10100SSX	M10 x 100	17	5	50
S1230SSX	M12 x 30	19	10	50
S1240SSX	M12 x 40	19	10	30
S1250SSX	M12 x 50	19	10	30
S1260SSX	M12 x 60	19	5	50

TYPE - SSB

SUB TYPE - SSB03

## Set Screw (DIN933) & Nut (DIN934)

A2 Austenitic Stainless Steel



A fully metric threaded bolt used in a wide variety of applications.

HEX

Product Code	Size (mm)	Socket Size (mm)	Pack Qty (pcs)	Carton Qty (packs)
<b>TIMPAC</b>				
S616SSP	M6 x 16	10	8	10
S620SSP	M6 x 20	10	8	10
S625SSP	M6 x 25	10	6	10
S650SSP	M6 x 50	10	4	10
S820SSP	M8 x 20	13	6	10
S825SSP	M8 x 25	13	4	10
S840SSP	M8 x 40	13	2	10
S850SSP	M8 x 50	13	2	10
S1025SSP	M10 x 25	13	2	10
S1030SSP	M10 x 30	17	2	10
S1040SSP	M10 x 40	17	2	10
S1050SSP	M10 x 50	17	2	10
S1070SSP	M10 x 70	17	2	10
S10100SSP	M10 x 100	17	2	10
S1230SSP	M12 x 30	19	2	10
S1240SSP	M 12 x 40	19	2	10
S1250SSP	M12 x 50	19	2	10

TYPE - PAK

SUB TYPE - PAK26

# Stainless Steel Threaded Bar (DIN975)

**Superior Corrosion Resistance**



SUSTAINABLE STAINLESS STEEL

A2 Austenitic Stainless Steel



Product Code	Thread Ø x Length (mm)	Bundle Qty (pcs)	Pallet Qty (packs)
06TBSS	M6 x 1000	5	-
08TBSS	M8 x 1000	5	-
10TBSS	M10 x 1000	5	-
12TBSS	M12 x 1000	5	-
16TBSS	M16 x 1000	5	-
20TBSS	M20 x 1000	5	-

TYPE - TBS

SUB TYPE - TBS01

Commonly used with drop in anchors for suspending cable trays from ceilings or can be cut to a required length and used with chemical resin.

## Stainless Steel Nuts & Washers

**Superior Corrosion Resistance**



**SUSTAINABLE STAINLESS STEEL**

### Hex Full Nut (DIN934)

**A2 Austenitic Stainless Steel**



A full hex nut in A2 stainless steel, used for bolting and fastening applications.

Product Code	Size (mm)	Socket Size (mm)	Pack Qty (pcs)	Carton Qty (packs)	Pallet Qty (packs)
<b>BOX</b>					
NH45S	M4	7	1000	20	720
NH55S	M5	8	1000	20	720
NH85S	M8	13	200	20	720
NH105S	M10	17	100	20	720
<b>SMALL BAG</b>					
NH45SX	M4	7	10	1,000	-
NH55SX	M5	8	10	600	-
NH65SX	M6	10	10	350	-
NH85SX	M8	13	10	300	-
NH105SX	M10	17	10	150	-
NH125SX	M12	19	5	200	-
NH165SX	M16	24	5	100	-
<b>TIMPAC</b>					
NH55SP	M5	8	50	10	-
NH65SP	M6	10	40	10	-
NH85SP	M8	13	20	10	-
NH105SP	M10	17	10	10	-
NH125SP	M12	19	8	10	-
NH165SP	M16	24	2	10	-

TYPE - NUS/SSB/PAK      SUB TYPE - NUS01/SSB02/PAK28

### Nylon Nut - Type T (DIN985)

**A2 Austenitic Stainless Steel**



Type T hexagonal nylon nut with a metric thread. Sometimes known as a 'thin nut'.

• Conforms to ISO 10511

Product Code	Size (mm)	Socket Size (mm)	Pack Qty (pcs)	Carton Qty (packs)	Pallet Qty (packs)
<b>BOX</b>					
NT55S	M5	8	1000	16	576
NT65S	M6	10	500	16	576
NT105S	M10	17	100	16	576
<b>SMALL BAG</b>					
NT55SX	M5	8	10	600	-
NT65SX	M6	10	10	300	-
NT85SX	M8	13	10	300	-
NT105SX	M10	17	10	150	-
NT125SX	M12	19	5	200	-
NT165SX	M16	24	5	100	-
<b>TIMPAC</b>					
NT55SP	M5	8	20	10	-
NT65SP	M6	10	20	10	-
NT85SP	M8	13	10	10	-
NT105SP	M10	17	4	10	-
NT125SP	M12	19	4	10	-

TYPE - NUS/SSB/PAK      SUB TYPE - NUS02/SSB08/PAK29

### Hex Dome Nut (DIN1587)

**A2 Austenitic Stainless Steel**



A hexagonal dome nut with a metric thread. Ideal for protective or aesthetic uses.

Product Code	Size (mm)	Socket Size (mm)	Pack Qty (pcs)	Carton Qty (packs)	Pallet Qty (packs)
<b>BOX</b>					
ND55S	M5	8	500	16	576
ND65S	M6	10	200	20	720
<b>SMALL BAG</b>					
ND55SX	M5	8	10	500	-
ND65SX	M6	10	10	300	-
ND85SX	M8	13	10	200	-
ND105SX	M10	17	10	100	-
ND125SX	M12	19	5	100	-

TYPE - NUS/SSB      SUB TYPE - NUS03/SSB09

### Form A Washer (DIN125-A)

**A2 Austenitic Stainless Steel**



A traditional and commonly used washer for clamping and spacing applications.

• Conforms to BS4320

Product Code	Size x Outer Ø (mm)	Thickness (mm)	Pack Qty (pcs)	Carton Qty (packs)	Pallet Qty (packs)
<b>BOX</b>					
WA45S	M4 x 9	0.8	1,000	60	2160
WA55S	M5 x 10	1.0	1,000	40	1440
WA85S	M8 x 16	1.6	500	24	864
WA125S	M12 x 24	2.5	200	16	576
WA165S	M16 x 30	3.0	100	18	648
<b>SMALL BAG</b>					
WA45SX	M4 x 9	0.8	50	800	-
WA55SX	M5 x 10	1.0	50	600	-
WA65SX	M6 x 12	1.6	20	700	-
WA85SX	M8 x 16	1.6	20	500	-
WA105SX	M10 x 20	2.0	10	480	-
WA125SX	M12 x 24	2.5	10	250	-
WA165SX	M16 x 30	3.0	10	180	-
<b>TIMPAC</b>					
WA55SP	M5 x 10	1.0	50	10	-
WA65SP	M6 x 12	1.6	50	10	-
WA85SP	M8 x 16	1.6	30	10	-
WA105SP	M10 x 20	2.0	20	10	-
WA125SP	M12 x 24	2.5	10	10	-
WA165SP	M16 x 30	3.0	6	10	-

TYPE - WAS/SSB/PAK      SUB TYPE - WAS01/SSB01/PAK30

### Form B Washer (DIN125-B)

**A2 Austenitic Stainless Steel**



Thinner than a Form A, used for clamping and spacing applications.

• Conforms to BS4320

Product Code	Size x Outer Ø (mm)	Thickness (mm)	Pack Qty (pcs)	Carton Qty (packs)	Pallet Qty (packs)
<b>BOX</b>					
WB65S	M6 x 12	0.8	1,000	40	1440
WB105S	M10 x 20	1.25	500	18	864
WB165S	M16 x 30	2.0	100	24	864
<b>SMALL BAG</b>					
WB65SX	M6 x 12	0.8	20	900	-
WB85SX	M8 x 16	1.0	20	500	-
WB105SX	M10 x 20	1.25	10	600	-
WB125SX	M12 x 24	1.6	10	380	-
WB165SX	M16 x 30	2.0	10	200	-

TYPE - WAS/SSB      SUB TYPE - WAS03/SSB06

### Penny / Repair Washer (DIN9054)

**A2 Austenitic Stainless Steel**



A large diameter washer ideal for spreading the clamping load, reducing a hole diameter and packing out. Also known as a 'mudguard' washer.

Product Code	Size x Outer Ø (mm)	Thickness (mm)	Pack Qty (pcs)	Carton Qty (packs)	Pallet Qty (packs)
<b>BOX</b>					
WP625SS	M6 x 25	1.5	200	24	864
WP825SS	M8 x 25	1.5	200	24	864
WP835SS	M8 x 35	1.5	200	24	432
WP1025SS	M10 x 25	1.5	200	24	864
WP1035SS	M10 x 35	1.5	200	12	432
<b>SMALL BAG</b>					
WP525SSX	M5 x 25	1.5	10	380	-
WP625SSX	M6 x 25	1.5	10	380	-
WP825SSX	M8 x 25	1.5	10	380	-
WP835SSX	M8 x 35	1.5	10	250	-
WP1025SSX	M10 x 25	1.5	10	400	-
WP1035SSX	M10 x 35	1.5	10	250	-
WP1235SSX	M12 x 35	1.5	10	250	-
<b>TIMPAC</b>					
WP625SSP	M6 x 25	1.5	10	10	-
WP825SSP	M8 x 25	1.5	8	10	-
WP1035SSP	M10 x 35	1.5	4	10	-

TYPE - WAS/SSB/PAK      SUB TYPE - WAS02/SSB07/PAK31

# Rivets

Quick and easy to use fasteners designed for thin sheet and hard plastic applications. Ideal for applications where welding or bolting is not possible.

Available in A2 304 stainless steel and aluminium for corrosion resistance.



# Riveters

Hard wearing riveters suitable for the professional user. Constructed from all metal components for simple and effortless installation of a variety of rivets including dome head and flange head. Interchangeable nose pieces included for the installation of various sized rivets.



## Hand Riveter

A robust steel hand riveter, with a soft grip handle for user comfort. Ideal for DIY and professional use such as engineering, mechanics, roofing construction and more. Powder coated for a long lasting and durable finish.

- Soft grip handle for user comfort
- 4 interchangeable nose pieces
- Nose piece spanner included



Product Code	To Suit Rivets (mm)	Pack Qty (pcs)	Carton Qty (packs)
784555	3.0, 3.2, 4.0 & 4.8	1	10
TYPE - RVG		SUB TYPE - RVG01	

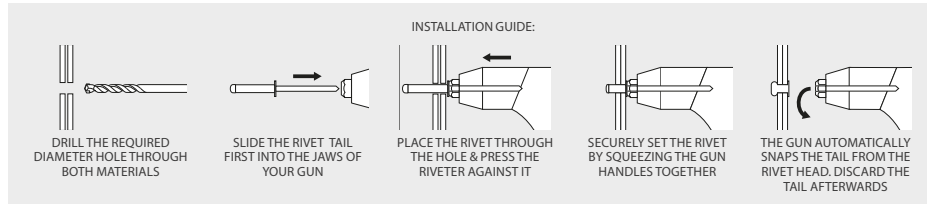
## Lazy Tongue Riveter

A heavy duty riveter designed for repetitive work. During installation the lattice mechanism increases driving force, reducing work time and effort. Ideal for professional use such as engineering, mechanics, roofing construction and more. Powder coated for a long lasting and durable finish.

- Lattice mechanism increases driving force
- 5 interchangeable nose pieces
- Nose piece spanner included



Product Code	To Suit Rivets (mm)	Pack Qty (pcs)	Carton Qty (packs)
784101	3.0, 3.2, 4.0, 4.8, 6.0 & 6.4	1	10
TYPE - RVG		SUB TYPE - RVG01	



## Dome Head Rivets (DIN7337)



- Ideal for sheet to sheet applications.
- Aluminium body for an enhanced resistance to corrosion.

**CORROSION RATING**



**Aluminium**

Urban and industrial areas with a low salt atmosphere

Product Code	Head Ø x Length (mm)	Drill Hole Ø (mm)	Min. Grip Range (mm)	Max. Grip Range (mm)	Pack Qty (pcs)	Carton Qty (packs)	Pallet Qty (packs)
<b>BOX</b>							
748456	3.2 x 6	3.3	1.5	3.5	500	20	20
748741	3.2 x 8	3.3	3.5	5.5	500	20	20
748852	3.2 x 10	3.3	5.5	7.5	500	20	20
748963	4.0 x 8	4.1	3.0	5.0	500	20	20
748369	4.0 x 10	4.1	5.0	6.5	500	20	20
748258	4.0 x 12	4.1	6.5	8.5	500	20	20
748147	4.8 x 10	4.9	4.5	6.0	500	10	10
748951	4.8 x 12	4.9	6.0	8.0	500	10	10
748357	4.8 x 14	4.9	8.0	10.0	500	10	10

Product Code	Head Ø x Length (mm)	Drill Hole Ø (mm)	Min. Grip Range (mm)	Max. Grip Range (mm)	Pack Qty (pcs)	Carton Qty (packs)	Pallet Qty (packs)
<b>TIMPAC</b>							
748456P	3.2 x 6	3.3	1.5	3.5	104	10	-
748741P	3.2 x 8	3.3	3.5	5.5	100	10	-
748852P	3.2 x 10	3.3	5.5	7.5	90	10	-
748963P	4.0 x 8	4.1	3.0	5.0	70	10	-
748369P	4.0 x 10	4.1	5.0	6.5	67	10	-
748258P	4.0 x 12	4.1	6.5	8.5	63	10	-
748147P	4.8 x 10	4.9	4.5	6.0	48	10	-
748951P	4.8 x 12	4.9	6.0	8.0	46	10	-
748357P	4.8 x 14	4.9	8.0	10.0	41	10	-

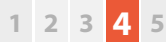
TYPE - RIV/PAK

SUB TYPE - RIV01/PAK67



- Ideal for sheet to sheet applications.
- A2 stainless steel body for ultimate resistance to corrosion.

**CORROSION RATING**



**A2 / Aust SS**

Urban and industrial areas with a moderate salt atmosphere

Product Code	Head Ø x Length (mm)	Drill Hole Ø (mm)	Min. Grip Range (mm)	Max. Grip Range (mm)	Pack Qty (pcs)	Carton Qty (packs)	Pallet Qty (packs)
<b>BOX</b>							
748023	3.2 X 6	3.3	1.0	3.0	500	20	720
748613	3.2 X 8	3.3	3.0	5.0	500	20	720
748100	4.0 X 10	4.1	4.5	6.5	500	10	360
748531	4.0 X 12	4.1	6.5	8.5	250	20	720
748868	4.8 X 14	4.9	8.0	9.5	250	20	720
748305	4.8 X 16	4.9	9.5	11.0	250	20	720

Product Code	Head Ø x Length (mm)	Drill Hole Ø (mm)	Min. Grip Range (mm)	Max. Grip Range (mm)	Pack Qty (pcs)	Carton Qty (packs)	Pallet Qty (packs)
<b>TIMPAC</b>							
748023P	3.2 X 6	3.3	1.0	3.0	102	10	-
748613P	3.2 X 8	3.3	3.0	5.0	99	10	-
748100P	4.0 X 10	4.1	4.5	6.5	64	10	-
748531P	4.0 X 12	4.1	6.5	8.5	61	10	-
748868P	4.8 X 14	4.9	8.0	9.5	39	10	-
748305P	4.8 X 16	4.9	9.5	11.0	37	10	-

TYPE - RIV/PAK

SUB TYPE - RIV01/PAK67



## Flange Head Rivets (DIN7337)



- Ideal for heavy duty sheet to sheet applications.
- Aluminium body for an enhanced resistance to corrosion.

**CORROSION RATING**



**Aluminium**

Urban and industrial areas with a low salt atmosphere

Product Code	Head Ø x Length (mm)	Drill Hole Ø (mm)	Min. Grip Range (mm)	Max. Grip Range (mm)	Pack Qty (pcs)	Carton Qty (packs)	Pallet Qty (packs)
<b>BOX</b>							
748918	4.8 x 12	4.9	6.0	8.0	250	10	360
748735	4.8 x 16	4.9	10.0	12.0	250	10	360
748499	4.8 x 20	4.9	15.0	17.0	250	10	360
748264	4.8 x 25	4.9	16.0	21.0	250	10	360

Product Code	Head Ø x Length (mm)	Drill Hole Ø (mm)	Min. Grip Range (mm)	Max. Grip Range (mm)	Pack Qty (pcs)	Carton Qty (packs)	Pallet Qty (packs)
<b>TIMPAC</b>							
748918P	4.8 x 12	4.9	6.0	8.0	40	10	-
748735P	4.8 x 16	4.9	10.0	12.0	37	10	-
748499P	4.8 x 20	4.9	15.0	17.0	32	10	-
748264P	4.8 x 25	4.9	16.0	21.0	30	10	-

TYPE - RIV/PAK

SUB TYPE - RIV01/PAK67

# Cable Ties

Designed to bundle and secure wires, cables, hoses and much more.



## Cable Tie

Black



Product Code	Size (mm)	Tensile Strength (kg)	Pack Qty (pcs)	Carton Qty (packs)	Pallet Qty (packs)
<b>Black</b>					
<b>BAG</b>					
25100CTB	2.5 x 100	8.10	100	600	1200
36140CTB	3.6 x 140	18.20	100	300	600
36200CTB	3.6 x 200	18.20	100	200	400
45180CTB	4.5 x 180	22.00	100	160	320
45200CTB	4.5 x 200	22.00	100	150	300
48160CTB	4.8 x 160	22.20	100	160	320
48200CTB	4.8 x 200	22.20	100	150	300
48250CTB	4.8 x 250	22.20	100	120	240
48300CTB	4.8 x 300	22.20	100	110	220
48370CTB	4.8 x 370	22.20	100	90	180
48430CTB	4.8 x 430	22.20	100	75	150
76250CTB	7.6 x 250	54.40	100	60	240
76300CTB	7.6 x 300	54.40	100	50	200
76370CTB	7.6 x 370	54.40	100	40	160
76540CTB	7.6 x 540	54.40	100	20	80
90530CTB	9.0 x 530	79.40	100	20	80

TYPE - ECT SUB TYPE - ECT02

Natural



Product Code	Size (mm)	Tensile Strength (kg)	Pack Qty (pcs)	Carton Qty (packs)	Pallet Qty (packs)
<b>Natural</b>					
<b>BAG</b>					
25100CTN	2.5 x 100	8.10	100	600	1200
36140CTN	3.6 x 140	18.20	100	300	600
36200CTN	3.6 x 200	18.20	100	200	400
48160CTN	4.8 x 160	22.20	100	150	300
48200CTN	4.8 x 200	22.20	100	120	240
48250CTN	4.8 x 250	22.20	100	110	220
48370CTN	4.8 x 370	22.20	100	90	180
48430CTN	4.8 x 430	22.20	100	75	150
76250CTN	7.6 x 250	54.40	100	60	240
76300CTN	7.6 x 300	54.40	100	50	200
76370CTN	7.6 x 370	54.40	100	40	160
76540CTN	7.6 x 540	54.40	100	20	80
90530CTN	9.0 x 530	79.40	100	20	80

TYPE - ECT SUB TYPE - ECT01

## Mixed Pack Cable Tie

Natural

Black



Product Code	Size (mm)	Colour	Cable Tie Qty	Pack Qty (pcs)	Carton Qty (packs)
<b>Natural</b>					
<b>Black</b>					
<b>TUBE - 200 PCS</b>					
CTMIX200	2.5 x 100	Natural	50	200	80
	2.5 x 100	Black	50		
	3.6 x 200	Natural	50		
	3.6 x 200	Black	50		
TYPE - ECT SUB TYPE - ECT04					
<b>Black Only</b>					
<b>TUBE - 500 PCS</b>					
CTMIX500	2.5 x 100	Black	200	500	24
	3.6 x 140	Black	200		
	4.8 x 200	Black	100		
TYPE - ECT SUB TYPE - ECT04					

## Coloured Cable Tie



Product Code	Size (mm)	Tensile Strength (kg)	Bag Qty (pcs)	Carton Qty (packs)
<b>BAG</b>				
48200CTMIX	4.8 x 200	22.20	200	75
TYPE - ECT SUB TYPE - ECT04				

## Cable Tie Plug



A simple solution for attaching a cable tie to masonry or timber. Black only.

Substrate	Masonry	Timber
Hole Size (mm)	8.0	7.0
Min. Hole Depth (mm)	40	40

Product Code	Size (mm)	Pack Qty (pcs)	Carton Qty (packs)	Pallet Qty (packs)
<b>BAG</b>				
840CTP	8.0 x 40	100	85	170
TYPE - ECT SUB TYPE - ECT02				

## Stainless Steel Cable Tie

A2 Austenitic Stainless Steel



**Superior Corrosion Resistance!**

- High tensile strength
- High temperature resistance (-80°C to +500°C)
- Conforms to BS 7671:2018

Product Code	Size (mm)	Tensile Strength (kg)	Pack Qty (pcs)	Carton Qty (packs)	Pallet Qty (packs)
<b>PACK</b>					
<b>A2 Austenitic Stainless Steel</b>					
46152CTSS	4.6 x 152	60.00	100	100	1800
46200CTSS	4.6 x 200	60.00	100	50	1600
46300CTSS	4.6 x 300	60.00	100	50	800
46350CTSS	4.6 x 350	60.00	100	50	900
46500CTSS	4.6 x 500	60.00	100	40	640
79350CTSS	7.9 x 350	80.00	100	25	450
TYPE - ECT SUB TYPE - ECT03					



**New**

# Cable Clips

Manufactured from strong HDPE material with a hardened nail, these cable clips are designed for securing and tidying a wide range of cabling types to wood, compressed board and masonry.



## Bell Wire

**WHITE**



Product Code	To Suit Cable Ø (mm)	Pack Qty (pcs)	Carton Qty (packs)
<b>PACK</b>			
<b>WHITE</b>			
225101	1.0	100	240
TYPE - CCL		SUB-TYPE - CCL01	

## Flat Twin & Earth

**GREY**



Product Code	To Suit Cable Ø (mm)	Pack Qty (pcs)	Carton Qty (packs)
<b>PACK</b>			
<b>GREY</b>			
225987	1.5	100	160
225654	2.5	100	160
225321	4.0	100	120
225753	6.0	100	120
225159	10.0	100	60
TYPE - CCL		SUB-TYPE - CCL01	

## Round

**WHITE**

**BLACK**



Product Code	To Suit Cable Ø (mm)	Pack Qty (pcs)	Carton Qty (packs)
<b>PACK</b>			
<b>WHITE</b>			
225147	3.5	100	360
225258	4.5	100	360
225369	5.0	100	240
225951	6.0	100	240
225357	7.0	100	160
225222	9.0	100	120
225591	11.0	100	80
225607	14.0	100	60
TYPE - CCL		SUB-TYPE - CCL01	
<b>BLACK</b>			
225999	7.0	100	160
TYPE - CCL		SUB-TYPE - CCL01	

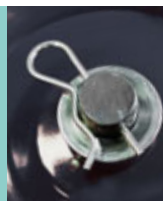
## Hook & Loop Strap



Convenient and temporary fastening.

Product Code	Pack Qty (pcs)	Carton Qty (packs)
<b>PACK</b>		
HOOKLOOPP	10	10
TYPE - PAK		SUB-TYPE - PAK66

## R Spring Clip & Cotter Pin



### R Spring Clip

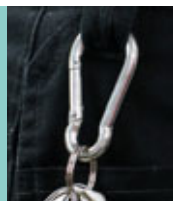
Commonly used to secure the ends of round shafts

### Cotter Pins

A metal split pin used to secure two components

Product Code	Description	Size (mm)	Pack Qty (pcs)	Carton Qty (packs)
<b>PACK</b>				
MIXRSPRINGP	R Spring Clip	Mixed	18	10
MIXCOTTERP	Cotter Pin	Mixed	16	10
TYPE - PAK			SUB-TYPE - PAK65	

## Snap Hooks



For quick & easy, low security, temporary fastening. Available in aluminium and steel.

Product Code	Length (mm)	Type	Colour	Pack Qty (pcs)	Carton Qty (packs)
<b>PACK</b>					
SSHOKP	60	Steel	Silver	3	10
ASHOKP	47	Aluminium	Red	5	10
TYPE - PAK			SUB-TYPE - PAK59		

## Hanging Fixings



## Picture Hanging

Electro Brass

Zinc



For hanging pictures.

Product Code	Item	Size	Pack Qty (pcs)	Carton Qty (packs)
PACK				
35BWP	Wire	3.5m	1	10
2PHSP	Single Hook	No.2	12	10
3PHDP	Double Hook	No.3	4	10
MPHP	Mixed Hooks	No.2 & 3	8	10

TYPE - PAK SUB TYPE - PAK32

## Adhesive Hook



Handy self adhesive hooks.

Product Code	Size	Pack Qty (pcs)	Carton Qty (packs)
PACK			
SMALLAHOOKP	Small	5	10
LARGEAHOOKP	Large	3	10

TYPE - PAK SUB TYPE - PAK59

## Mirror Plate

Electro Brass

Slotted

Plain



For mounting mirrors onto walls.

Product Code	Type	Size (mm)	Pack Qty (pcs)	Carton Qty (packs)
PACK				
PMP32P	Plain	32	4	5
PMP38P	Plain	38	4	5
SMP32P	Slotted	32	4	5
SMP38P	Slotted	38	4	5

TYPE - PAK SUB TYPE - PKO32

## Curtain Hook



Commonly used plastic curtain hooks.

Product Code	Colour	Pack Qty (pcs)	Carton Qty (packs)
PACK			
CHOOKP	White	35	10

TYPE - PAK SUB TYPE - PAK63

## Sawtooth Hanger

Electro Brass



Hanging of canvas and picture frames.

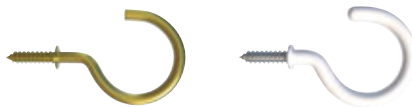
Product Code	Width (mm)	Pack Qty (pcs)	Carton Qty (packs)
PACK			
STOOTH41P	41	20	10
STOOTH63P	63	15	10
MIXSTOOTHP	41 & 63	15	10

TYPE - PAK SUB TYPE - PAK32

## Round Hook

Electro Brass

Zinc/White



A light duty horizontal or vertical hook to be used into wood for hanging small items such as keys.

Product Code	Hook Ø (mm)	Thread Ø (mm)	Thread Ø (gauge)	Length (mm)	Pack Qty (pcs)	Carton Qty (packs)
Electro Brass						
PACK						
19SHBP	10.0	3.0	4	19	15	10
25SHBP	13.0	3.0	4	25	10	10
38SHBP	21.0	4.0	8	38	5	10
Zinc/White						
PACK						
25SHWP	13.0	3.0	4	25	6	10
38SHWP	21.0	4.0	8	38	4	10

TYPE - PAK SUB TYPE - PAK33

## Screw Eye & Screw Hook

Zinc



A medium duty versatile solution for either hanging or attaching items to timber or masonry with the use of a plug.

Product Code	Hook Ø (mm)	Thread Ø (mm)	Thread Ø (gauge)	Length (mm)	Pack Qty (pcs)	Carton Qty (packs)
Screw Hook - Zinc						
PACK						
60SHP	16.0	5.5	12	60	4	10
80SHP	20.0	5.5	12	80	3	10
100SHP	20.0	5.5	12	100	2	10
Screw Eye - Zinc						
PACK						
30SEP	9.0	3.9	7	30	15	10
40SEP	12.0	4.2	8	40	10	10
45SEP	12.0	4.9	10	45	5	10
55SEP	16.0	5.5	12	55	4	10

TYPE - PAK SUB TYPE - PAK33

## Square Cup Hook

Electro Brass



A light duty horizontal hook to be used into wood for hanging small items.

Product Code	Bend (mm)	Thread Ø (mm)	Thread Ø (gauge)	Length (mm)	Pack Qty (pcs)	Carton Qty (packs)
PACK						
25SQBP	10.0	3.0	4	25	16	10
38SQBP	13.0	4.0	8	38	8	10

TYPE - PAK SUB TYPE - PAK33

## Vine Eye

Zinc



Multiple uses, but commonly used to thread string/wire, and to train plants up fences and walls with the use of a plastic plug.

Product Code	Hook Dia. (mm)	Thread Ø (mm)	Thread Ø (gauge)	Length (mm)	Pack Qty (pcs)	Carton Qty (packs)
PACK						
75VEP	16.0	5.5	12	75	4	10
100VEP	16.0	5.5	12	100	2	10

TYPE - PAK SUB TYPE - PAK33

## Sanitary Fixings

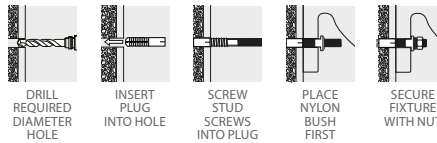


### Basin Fixing Kits

Designed to securely mount washbasins to a variety of solid building materials. Countersunk nylon bushes designed to ensure no damage is done to the basin during installation.



Can also be used into wood without nylon plugs.



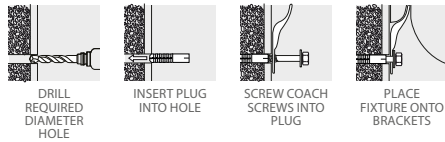
Product Code	Item	Size (mm)	Pack Qty (pcs)	Carton Qty (packs)
<b>Light Duty Basin Kit</b>				
<b>PACK</b>				
LDBK	Nylon Plugs	10.0 x 50	2	20
	Stud Screws	M8 x 100	2	
	Nylon Brushes	M8	2	
	Washers	M8	2	
	Hex Full Nuts	M8	2	
<b>Heavy Duty Basin Kit</b>				
<b>PACK</b>				
HDBK	Nylon Plugs	14.0 x 75	2	10
	Stud Screws	M10 x 140	2	
	Nylon Brushes	M10	2	
	Washers	M10	2	
	Hex Full Nuts	M10	2	

TYPE - SEK

SUB TYPE - SFK01

### Cloakroom Basin Fixing Kit

Designed to fix cloakroom basins to a variety of solid building materials. Can also be used into wood without nylon plugs.



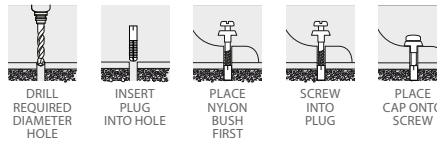
Product Code	Item	Size (mm)	Pack Qty (pcs)	Outer Bag Qty (packs)
<b>PACK</b>				
CBK	Basin Brackets	-	2	20
	Nylon Plugs	10.0 x 50	2	
	Coach Screws	7.0 x 60	2	
	Washers	M7	2	

TYPE - SEK

SUB TYPE - SFK01

### Pan/Bidet Fixing Kit

Designed for floor fixing pan/bidets into a variety of solid building materials. Countersunk nylon bushes designed to ensure no damage is done to the fixture during installation. Flat caps for a concealed finish. Can also be used into wood without nylon plugs.



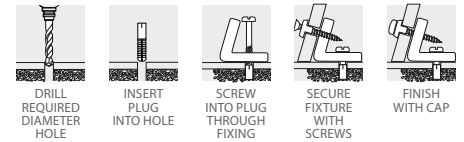
Product Code	Item	Size (mm)	Pack Qty (pcs)	Carton Qty (packs)
<b>PACK</b>				
PBK	Nylon Plugs	10.0 x 50	2	20
	Coach Screws	6.0 x 80	2	
	Nylon Bushes	6	2	
	Cover Caps	18	2	

TYPE - SEK

SUB TYPE - SFK01

### Adjustable WC/Bidet Fixing Kit

Designed to fix WC pan/bidets to a variety of solid building materials. Fully adjustable for a quick easy installation. Countersunk nylon bushes designed to ensure no damage is done to the fixture during installation. Can also be used into wood without nylon plugs.



Product Code	Item	Size (mm)	Pack Qty (pcs)	Carton Qty (packs)
<b>PACK</b>				
WCBK	Nylon Brackets	-	2	20
	Nylon Plugs	10.0 x 50	2	
	Coach Screws	6.0 x 70	2	
	Nylon Bushes	5	2	
	Washers	M6	2	
	Screws	4.5 x 40	2	
	Cover Caps	18	2	

TYPE - SEK

SUB TYPE - SFK01

### Plug & Chain

Replacement plugs and chains for baths and sinks. (Sold separately)



Product Code	Item	Size (inch)	Pack Qty (pcs)	Outer Bag Qty (packs)
<b>PACK</b>				
BATHPLUG112P	Plug	1 1/2	2	10
BATHPLUG134P	Plug	1 3/4	2	10
CSCHAIN12P	Chain	12	2	10
CSCHAIN18P	Chain	18	2	10

TYPE - PAK

SUB TYPE - PAK62

**New**

### Rad-Seal Radiator Pipe Guide & Seal

Radiator pipework installation aid and solution to eliminate potential air leakage and heat loss at vulnerable pipework entry points.



Product Code	Size (mm)	Pack Qty (pcs)
<b>PACK</b>		
LOC1115	140	2

TYPE - RDS

SUB TYPE - RDS01

**New**

### Radiator Key

**Solid Brass**

Solid brass radiator key for the bleeding of central heating radiators to remove trapped air.



Product Code	Material	Pack Qty (pcs)	Carton Qty (packs)
<b>PACK</b>			
725741	Solid Brass	2	10

TYPE - PAK

SUB TYPE - PAK65

New

# Pipe Fittings

Manufactured by Elysee

Extensive range of WRAS approved compression fittings for connecting MDPE pipe. Impact resistant and simple push-in & turn action required for installation.



1606380

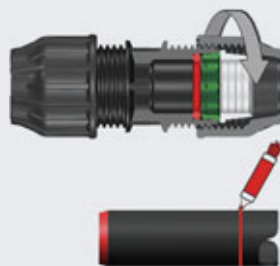
- Simple push-in & turn connection
- No special tools required
- Durable and high resistance to impact
- Dismountable if required to allow for alteration/adjustments
- Designed to withstand sub-zero temperatures
- WRAS approved for potable water and to ISO 17885



## Assembly Instructions

- Undo the nut up to the last thread. Do not remove the nut from the body.
  - Cut the pipe straight, remove burrs & chamfer the end of the pipe with a chamfering tool.
  - Mark the length on the PE pipe, to which the pipe must be pushed into the fitting.

\*Lubricate the end of the pipe.



- Push the PE pipe into the fitting, through the nut, split ring and O-ring, as far as it will go until it meets the 1st resistance. (The mark on the pipe is now just in front of the nut).



- Firmly hand tighten the nut. For sizes of 40mm and above, use a wrench for a further half turn for final tightening.



### Notes:

- Lubrication of the pipe end is optional and will ease insertion of the pipe (use silicone lubricant).
- The fitting can safely be used again after disassembling.
- The full hydraulic seal is achieved when the pipe passes through the O-ring.



## Coupler



Used to connect two pieces of MDPE pipe. Both pipes should be the same diameter.

Product Code	Size (mm)	Pack Qty (pcs)	Carton Qty (packs)
733012	20 x 20	1	15
733100	25 x 25	1	15
733111	32 x 32	1	10

TYPE - PPF SUB TYPE - PPF01

## Male Adaptor



Used to connect MDPE pipe to a female BSP threaded fitting.

Product Code	Size	Pack Qty (pcs)	Carton Qty (packs)
733155	20mm x 1/2"	1	25
733166	25mm x 3/4"	1	20
733177	32mm x 1"	1	10

TYPE - PPF SUB TYPE - PPF01

## Female Adaptor



Used to connect MDPE pipe to a male BSP threaded fitting.

Product Code	Size	Pack Qty (pcs)	Carton Qty (packs)
733188	20mm x 1/2"	1	25
733199	25mm x 3/4"	1	20
733200	32mm x 1"	1	10

TYPE - PPF SUB TYPE - PPF01

## Copper Adaptor



Provides a connection from MDPE pipe to standard copper pipework.

Product Code	Size (mm)	Pack Qty (pcs)	Carton Qty (packs)
733300	20 x 15	1	10
733311	25 x 15	1	20
733322	25 x 22	1	10

TYPE - PPF SUB TYPE - PPF01

## Reducing Set



Used to connect two pieces of MDPE pipe of different diameters.

Product Code	Size (mm)	Pack Qty (pcs)	Carton Qty (packs)
733333	25 x 20	1	15
733344	32 x 20	1	10
733355	32 x 25	1	10

TYPE - PPF SUB TYPE - PPF01

## Imp/Metric Coupler



Allows the connection of metric MDPE pipe (blue or black) to old imperial sized black pipes.

Product Code	Size	Pack Qty (pcs)	Carton Qty (packs)
733277	1/2" x 20mm	1	10
733288	1/2" x 25mm	1	10
733299	3/4" x 25mm	1	10

TYPE - PPF SUB TYPE - PPF01

## End Plug



Provides a secure and sometimes temporary end to a pipework system.

Product Code	Size (mm)	Pack Qty (pcs)	Carton Qty (packs)
733122	20	1	20
733133	25	1	20
733144	32	1	10

TYPE - PPF SUB TYPE - PPF01

## Wall Plate Elbow (PP)



Used for fitting to a wall and allows the connection of MDPE pipe through to a BSP threaded tap.

Product Code	Size	Pack Qty (pcs)	Carton Qty (packs)
733422	20mm x 1/2"	1	10
733433	25mm x 3/4"	1	10

TYPE - PPF SUB TYPE - PPF01

## 90 Degree Elbow



Used to change the direction of pipework in a system by 90 degrees. Pipes should be the same diameter.

Product Code	Size (mm)	Pack Qty (pcs)	Carton Qty (packs)
733244	20 x 20	1	20
733255	25 x 25	1	15
733266	32 x 32	1	5

TYPE - PPF SUB TYPE - PPF01

## 90 Degree Tee



Provides the ability to connect three separate lengths of pipe into one. MDPE pipes should all be the same diameter.

Product Code	Size (mm)	Pack Qty (pcs)	Carton Qty (packs)
733211	20 x 20 x 20	1	15
733222	25 x 25 x 25	1	10
733233	32 x 32 x 32	1	70

TYPE - PPF SUB TYPE - PPF01

## Stop Tap (PP)



Used to securely isolate or stop the flow of water in a system.

Product Code	Size (mm)	Pack Qty (pcs)	Carton Qty (packs)
733399	20 x 20	1	65
733400	25 x 25	1	55
733411	32 x 32	1	40

TYPE - PPF SUB TYPE - PPF01

## Pipe Liner



Must be used in all MDPE pipe connections to add strength by supporting the shape of the pipe.

Product Code	Size (mm)	Pack Qty (pcs)	Carton Qty (packs)
733366	20	1	50
733377	25	1	50
733388	32	1	20

TYPE - PPF SUB TYPE - PPF01

# Pipe Clips

Manufactured by Talon



## Single Quick Lock Pipe Clip

Designed to withstand repeated opening and closing offering 360° degree pipe retention. Secure grip and complete security when pipe is in place, with the snap tight locking top. The high stand-off allows for lagging and heat circulation.



Product Code	To Suit Pipe Size (mm)	To Fit Screw Ø (mm)	To Fit Screw Gauge (Imp.)	Pack Qty (pcs)	Carton Qty (packs)
PACK					
QS15	15.0	3.5 - 4.5	6 - 8	50	20
QS22	22.0	3.5 - 4.5	6 - 8	50	20
QS28	28.0	3.5 - 4.5	6 - 8	50	10
TYPE - PPC			SUB TYPE - PPC01		

## Quick Lock Spacer

The Quick Lock spacer is designed to suit the single quick lock pipe clip.

It allows a greater stand-off where site conditions apply or where thicker lagging is used.



Product Code	Height (mm)	To Fit Screw Ø (mm)	To Fit Screw Gauge (Imp.)	Pack Qty (pcs)	Carton Qty (packs)
PACK					
QSP1	15	3.5 - 4.5	6 - 8	50	30
TYPE - PPC			SUB TYPE - PPC01		

## Single Open Pipe Clip

The single open clip provides a strong and reliable snap fit pipe fixing.



Product Code	To Suit Pipe Size (mm)	To Fit Screw Ø (mm)	To Fit Screw Gauge (Imp.)	Pack Qty (pcs)	Carton Qty (packs)
PACK					
OPS15	15.0	3.5 - 4.5	6 - 8	50	20
OPS22	22.0	3.5 - 4.5	6 - 8	50	20
OPS28	28.0	3.5 - 4.5	6 - 8	50	20
TYPE - PPC			SUB TYPE - PPC01		

## Double Quick Lock Pipe Clip

Double robust clips designed to withstand repeated opening and closing where needed. 360° pipe retention.



Product Code	To Suit Pipe Size (mm)	To Fit Screw Ø (mm)	To Fit Screw Gauge (Imp.)	Pack Qty (pcs)	Carton Qty (packs)
PACK					
QD15	15.0	3.5 - 4.5	6 - 8	50	10
QD22	22.0	3.5 - 4.5	6 - 8	50	5
TYPE - PPC			SUB TYPE - PPC01		

## MDPE Pipe Clip

The single hinged clip is available in sizes to fit MDPE pipe and in blue to match the pipe colour.



Product Code	To Suit Pipe Size (mm)	To Fit Screw Ø (mm)	To Fit Screw Gauge (Imp.)	Pack Qty (pcs)	Carton Qty (packs)
PACK					
TMS20	19.0 - 21.0	3.5 - 4.5	6 - 8	10	100
TMS25	25.0 - 27.4	3.5 - 4.5	6 - 8	10	50
TMS35	31.8 - 35.0	3.5 - 5.0	6 - 10	10	50
TYPE - PPC			SUB TYPE - PPC01		

## Nail In Pipe Clip

Zinc plated hardened and tempered nail suitable for all types of masonry.



Product Code	To Suit Pipe Size (mm)	Nail Size (mm)	Pack Qty (pcs)	Carton Qty (packs)
PACK				
NCW10	10.0	2.5 x 30	50	40
NCW15	15.0	2.5 x 45	50	20
NCW22	22.0	2.5 x 30	50	20
TYPE - PPC			SUB TYPE - PPC01	

# Hose Clips

Manufactured to BS 5315-1991



Zinc plated carbon steel worm drive hose clips with a 7mm slotted hex.



Product Code	Hose Size (mm)	Pack Qty (pcs)	Outer Qty (Packs)
PACK			
HC9512P	9.5 - 12	4	10
HC1116P	11 - 16	4	10
HC1320P	13 - 20	4	10
HC1825P	18 - 25	4	10
HC2230P	22 - 30	4	10
HC2535P	25 - 35	4	10
BAG			
HC9512	9.5 - 12	10	100
HC1116	11 - 16	10	100
HC1320	13 - 20	10	100
HC1622	16 - 22	10	100
HC1825	18 - 25	10	100
HC2230	22 - 30	10	50
HC2535	25 - 35	10	50
HC3040	30 - 40	10	50
HC3550	35 - 50	10	50
HC4055	40 - 55	10	20
HC4560	45 - 60	10	20
HC5570	55 - 70	10	20
HC6080	60 - 80	10	20
HC7090	70 - 90	10	20
HC90120	90 - 120	10	10
HC110140	110 - 140	10	10
TYPE - PAK/PPC		SUB TYPE - PAK34/PPC01	

## Mixed Hose Clips



Mixed bag containing the 8 most popular sizes. Zinc plated carbon steel worm drive hose clips with a 7mm slotted hex.

Product Code	Hose Size (mm)	Pack Qty (pcs)	Bag Qty (packs)	Carton Qty (packs)
BAG				
HCMIX	11 - 16	10	50	6
	13 - 20	10		
	18 - 25	10		
	22 - 30	10		
	25 - 35	4		
	35 - 50	2		
	60 - 80	2		
	110 - 140	2		
TYPE - PPC			SUB TYPE - PPC01	

New Range!

## Jubilee Clips



### Jubilee Clip



The original Jubilee Clip, the product that started it all!

For the vast majority of applications this sturdy worm drive hose clip is more than suitable.

Continuously threaded band enabling extra flexibility when adjusting the clip to the correct size. The smooth inside profile of the band and rolled edges give protection for all types of hoses including soft hoses made from rubber or silicone.

Available in zinc protected mild steel and stainless steel suitable for marine and offshore oil and gas applications.

Product Code	Product Code	Size (mm)	Pack Qty (pcs)	Carton Qty (packs)
<b>Zinc Protected Mild Steel</b>	<b>304 Stainless Steel</b>			
<b>BOX</b>				
JUB000MS	JUB000SS	9.5-12	10	100
JUBM00MS	JUBM00SS	11-16	10	100
JUB00MS	JUB00SS	13-20	10	100
JUB0MS	JUB0SS	16-22	10	100
JUB0XMS	JUB0XSS	18-25	10	100
JUB1AMS	JUB1ASS	22-30	10	100
JUB1MS	JUB1SS	25-35	10	100
JUB1XMS	JUB1XSS	30-40	10	100
JUB1MMS	JUB1MSS	32-45	10	100
JUB2AMS	JUB2ASS	35-50	10	100
JUB2MS	JUB2SS	40-55	10	100
JUB2XMS	JUB2XSS	45-60	10	100
JUB3MS	JUB3SS	55-70	10	100
<b>BAG</b>				
JUB3XMS	JUB3XSS	60-80	10	150
JUB4MS	JUB4SS	70-90	10	125
JUB4XMS	JUB4XSS	85-100	10	100
JUB5MS	JUB5SS	90-120	10	100
JUB6MS	JUB6SS	110-140	5	75
JUB6XMS	JUB6XSS	120-150	5	50
JUB7MS	JUB7SS	135-165	5	50
JUB75MS	JUB75SS	158-190	5	50
JUB85MS	JUB85SS	184-216	5	50
JUB95MS	JUB95SS	210-242	5	50
JUB105MS	JUB105SS	235-267	5	50
JUB115MS	JUB115SS	260-292	5	50
JUB125MS	JUB125SS	286-318	5	50

TYPE - JUB

SUB TYPE - JUB01

### Superclamp



Superclamps are available from size 17mm, with size 64mm and above offering the highest tightening torques with 8.8 high tensile bolts allowing an impressive maximum recommended torque of 25Nm.

Naturally with the smaller clamps using a smaller bolt the torques are lower, but even so the torques are impressive by comparison to alternatives for the same size range.

Available in zinc protected mild steel and stainless steel suitable for marine and offshore oil and gas applications.

Product Code	Product Code	Size (mm)	Pack Qty (pcs)	Carton Qty (packs)
<b>Zinc Protected Mild Steel</b>	<b>304 Stainless Steel</b>			
<b>BAG</b>				
JUBJSC019MS	JUBJSC019SS	17-19	10	600
JUBJSC022MS	JUBJSC022SS	20-22	10	600
JUBJSC025MS	JUBJSC025SS	23-25	10	520
JUBJSC028MS	JUBJSC028SS	26-28	10	440
JUBJSC031MS	JUBJSC031SS	29-31	10	380
JUBJSC035MS	JUBJSC035SS	32-35	5	200
JUBJSC039MS	JUBJSC039SS	36-39	5	200
JUBJSC043MS	JUBJSC043SS	40-43	5	195
JUBJSC047MS	JUBJSC047SS	44-47	5	150
JUBJSC051MS	JUBJSC051SS	48-51	5	150
JUBJSC055MS	JUBJSC055SS	52-55	5	150
JUBJSC059MS	JUBJSC059SS	56-59	5	120
JUBJSC063MS	JUBJSC063SS	60-63	2	108
JUBJSC067MS	JUBJSC067SS	64-67	2	80
JUBJSC073MS	JUBJSC073SS	68-73	2	66
JUBJSC079MS	JUBJSC079SS	74-79	2	66
JUBJSC085MS	JUBJSC085SS	80-85	2	48
JUBJSC091MS	JUBJSC091SS	86-91	2	48
JUBJSC097MS	JUBJSC097SS	92-97	2	48
JUBJSC103MS	JUBJSC103SS	98-103	2	40
JUBJSC112MS	JUBJSC112SS	104-112	2	36
JUBJSC121MS	JUBJSC121SS	113-121	2	32
JUBJSC130MS	JUBJSC130SS	122-130	2	20
JUBJSC139MS	JUBJSC139SS	131-139	2	20
JUBJSC148MS	JUBJSC148SS	140-148	2	20
JUBJSC161MS	JUBJSC161SS	149-161	2	16
JUBJSC174MS	JUBJSC174SS	162-174	2	16
JUBJSC187MS	JUBJSC187SS	175-187	2	16
JUBJSC200MS	JUBJSC200SS	188-200	2	14
JUBJSC213MS	JUBJSC213SS	201-213	2	12
JUBJSC226MS	JUBJSC226SS	214-226	2	10
JUBJSC239MS	JUBJSC239SS	227-239	2	8
JUBJSC255MS	JUBJSC255SS	240-255	2	8
JUBJSC265MS	-	253-265	2	8

TYPE - JUB

SUB TYPE - JUB01

### High Torque Clip



High Torque clips are made of all stainless steel with a two part housing and cut through band, keeping the band straight at the point of engagement and fully engaging all

of the screw thread giving a superior tightening torque.

Ideal where a high clamping force is required, with a flexible band material they can achieve a high level of friction even against a smooth surface such as a metal pole.

Product Code	Size (mm)	Pack Qty (pcs)	Carton Qty (packs)
<b>304 Stainless Steel</b>			
<b>BOX</b>			
JUBHT035	20-35	10	300
JUBHT040	25-40	10	300
JUBHT045	25-45	10	200
JUBHT050	30-50	10	200
JUBHT055	35-55	10	200
JUBHT060	40-60	10	200
JUBHT065	40-65	10	200
JUBHT070	40-70	10	100
JUBHT080	60-80	10	100
JUBHT095	70-95	10	80
JUBHT100	80-100	10	80
JUBHT120	90-120	5	80
JUBHT140	110-140	5	75
JUBHT160	130-160	5	75
JUBHT180	150-180	5	50
JUBHT200	170-200	5	50
JUBHT220	190-220	5	50
JUBHT240	210-240	5	50
JUBHT260	230-260	5	50
JUBHT280	250-280	5	50
JUBHT300	270-300	5	50
JUBHT320	290-320	5	50
JUBHT340	310-340	5	50
JUBHT360	330-360	5	50
JUBHT380	350-380	5	50
JUBHT400	370-400	5	40
JUBHT420	390-420	5	40
JUBHT440	410-440	5	40
JUBHT460	430-460	5	40
JUBHT480	450-480	5	40
JUBHT500	470-500	5	40
JUBHT520	490-520	5	40

TYPE - JUB

SUB TYPE - JUB01



## Mixed Packs, Sets & Dispensers

Please see page 74 - 75

## Multiband

### Banding



Multiband is a self assembly endless banding or screw band system, which allows the user to cut the band to the desired length.

Used in areas such as heating, ventilation and air conditioning (HVAC), sign fixing, conduit and cable retention and lagging, this product is very versatile.

A number of screw and housing designs are available to suit any application.

Available as a zinc protected mild steel or 304 stainless steel clamp.

Product Code	Product Code	Size W x L	Pack Qty (pcs)	Carton Qty (packs)
Zinc Protected Mild Steel	304 Stainless Steel			
BOX				
JUBMB1701	JUBMB1801	11mm x 10m	1	15
JUBMB1702	JUBMB1802	11mm x 30m	1	5
TYPE - JUB		SUB TYPE - JUB07/08		



### Housing & Screws



11mm width Multiband housing and screws in boxes of 25.

Product Code	Product Code	Size (mm)	Pack Qty (pcs)	Carton Qty (packs)
Zinc Protected Mild Steel	304 Stainless Steel			
BOX				
JUBMB1704	JUBMB1803	11	25	30
TYPE - JUB		SUB TYPE - JUB07/08		

### Multiband Pocket Pack



Multiband Pocket Pack is a small pack containing 11mm banding and standard housings & screws for your convenience.

• 3m Length

Product Code	Product Code	Size W x L	Pack Qty (pcs)	Carton Qty (packs)
Zinc Protected Mild Steel	304 Stainless Steel			
BOX				
JUBMB1707	JUBMB1806	11mm x 3m	1	20
TYPE - JUB		SUB TYPE - JUB07/08		

### Housings & Allen Screws



11mm width Multiband housing and allen screws in boxes of 25.

Product Code	Product Code	Size (mm)	Pack Qty (pcs)	Carton Qty (packs)
Zinc Protected Mild Steel	304 Stainless Steel			
BOX				
JUBMB1705	JUBMB1804	11	25	30
TYPE - JUB		SUB TYPE - JUB07/08		

### Multiband Handy Pack



Multiband Handy Pack contains 11mm banding and standard housings & screws for your convenience.

• 10m Length

Product Code	Product Code	Size W x L	Pack Qty (pcs)	Carton Qty (packs)
Zinc Protected Mild Steel	304 Stainless Steel			
BOX				
JUBMB1708	JUBMB1807	11mm x 10m	1	15
TYPE - JUB		SUB TYPE - JUB07/08		

### Captive Screws



11mm width Multiband captive housing and screws in boxes of 25.

Product Code	Product Code	Size (mm)	Pack Qty (pcs)	Carton Qty (packs)
Zinc Protected Mild Steel	304 Stainless Steel			
BOX				
JUBMB1706	JUBMB1805	11	25	30
TYPE - JUB		SUB TYPE - JUB07/08		

## Flexiband

### Banding



Flexiband is a band and buckle system offering a high strength fastening solution in 304 Stainless Steel.

Provides 4 different band widths 9mm, 13mm, 16mm and 19mm.

Flexiband is ideal for strapping items securely and can commonly be seen in applications such as sign fixing where the tamper proof nature of the product is of paramount importance.

Product Code	Size W x L	Pack Qty (pcs)	Carton Qty (packs)
<b>304 Stainless Steel</b>			
BOX			
JUBFB09B	9mm x 30m	1	5
JUBFB13B	13mm x 30m	1	5
JUBFB16B	16mm x 30m	1	5
TYPE - JUB		SUB TYPE - JUB11	

### Buckles

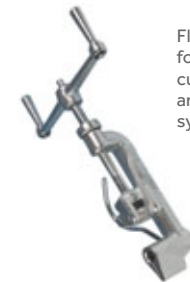


9mm width, 304 grade stainless steel Flexiband buckles.

Requires 9mm banding & Flexiband Operating tool.

Product Code	Size (mm)	Pack Qty (pcs)	Carton Qty (packs)
<b>304 Stainless Steel</b>			
BOX			
JUBFB09H	9	25	100
JUBFB13H	13	25	50
TYPE - JUB		SUB TYPE - JUB11	

### Flexiband Operating Tool



Flexiband Tool for tensioning & cutting of 'band and buckle' system.

Product Code	Size W x L (mm)	Pack Qty (pcs)	Carton Qty (packs)
JUBFBT	9mm	1	4
TYPE - JUB		SUB TYPE - JUB11	



## 'P' Clips



P Clips are manufactured from a flexible stainless steel one piece band with an ethylene-propylene-diene monomer (EPDM) rubber liner.

The band features a stepped design to allow the clip to sit flush with the rubber liner in place. The single piece construction of our pipe clips

means that there are no joins making the clip very strong. The upper hole has an elongated design allowing easy fitting of the clip.

P Clips conform to DIN3016

Product Code	Product Code	Size (mm)	Pack Qty (pcs)	Carton Qty (packs)
<b>Zinc Protected Mild Steel</b>	<b>304 Stainless Steel</b>			
BAG				
JUBJPC005MS	JUBJPC005SS	5	20	800
JUBJPC006MS	JUBJPC006SS	6	20	800
JUBJPC008MS	JUBJPC008SS	8	20	800
JUBJPC009MS	JUBJPC009SS	9	20	700
JUBJPC010MS	JUBJPC010SS	10	20	700
JUBJPC012MS	JUBJPC012SS	12	20	600
JUBJPC013MS	JUBJPC013SS	13	20	600
JUBJPC014MS	JUBJPC014SS	14	20	500
JUBJPC015MS	JUBJPC015SS	15	20	500
JUBJPC016MS	JUBJPC016SS	16	20	400
JUBJPC017MS	JUBJPC017SS	17	20	400
JUBJPC018MS	JUBJPC018SS	18	20	360
JUBJPC019MS	JUBJPC019SS	19	20	360
JUBJPC020MS	JUBJPC020SS	20	20	320
JUBJPC021MS	JUBJPC021SS	21	20	320
JUBJPC022MS	JUBJPC022SS	22	20	300
JUBJPC025MS	JUBJPC025SS	25	20	280
JUBJPC027MS	JUBJPC027SS	27	20	280
JUBJPC028MS	JUBJPC028SS	28	20	260
JUBJPC029MS	JUBJPC029SS	29	20	260
JUBJPC030MS	JUBJPC030SS	30	20	240
JUBJPC032MS	JUBJPC032SS	32	20	220
JUBJPC035MS	JUBJPC035SS	35	20	200
JUBJPC040MS	JUBJPC040SS	40	20	180
JUBJPC044MS	JUBJPC044SS	44	20	160
JUBJPC048MS	JUBJPC048SS	48	20	140
JUBJPC052MS	JUBJPC052SS	52	20	120

TYPE - JUB

SUB TYPE - JUB01

## Wingspade



Based on Light Range Clips and suitable for hand fitting. Jubilee® Wingspade clips are supplied with a thumb screw, allowing easy torquing using just a thumb and forefinger. Suited to fittings that may need to be removed

from time to time such as dust extraction units, or domestic hoses.

Product Code	Size (mm)	Pack Qty (pcs)	Carton Qty (packs)
Zinc Protected Mild Steel			
BOX			
JUBWS012	9.5-12	20	1000
JUBWS016	11-16	20	1000
JUBWS020	13-20	20	900
JUBWS022	12-22	20	800
JUBWS027	16-27	20	700
JUBWS032	20-32	20	600
JUBWS040	25-40	20	440
JUBWS045	30-45	20	300
JUBWS050	32-50	20	240
JUBWS060	40-60	20	200
JUBWS070	50-70	20	160

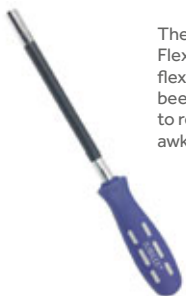
TYPE - JUB

SUB TYPE - JUB06



## Jubilee Tools

### Flexidriver Tool



The invaluable Flexidriver with flexible shaft has been designed to reach all those awkward places

Product Code	Socket Size (mm)	Pack Qty (pcs)	Carton Qty (packs)
JUBFLX	7	1	

TYPE - JUB

SUB TYPE - JUB12

### Clipdriver Tool



Clipdriver has a rigid shaft and is available in the length of 95mm

Product Code	Socket Size (mm)	Pack Qty (pcs)	Carton Qty (packs)
JUBCDR95	7	1	

TYPE - JUB

SUB TYPE - JUB12

### Side Closing Pincer Tool



The side closing pincer is used to crimp the ear of Jubilee 'O' clips to affect a proper seal. Ideal for use when access to the ear is difficult.

Product Code	Pack Qty (pcs)	Carton Qty (packs)
JUBP1099	1	

TYPE - JUB

SUB TYPE - JUB12

### Flexiband Operating Tool



Flexiband Tool for tensioning & cutting of 'band and buckle' system.

Product Code	Size (mm)	Pack Qty (pcs)	Carton Qty (packs)
JUBFBT	9	1	4

TYPE - JUB

SUB TYPE - JUB11

# Jubilee Packs & Kits



## Jubilee Clip Pocket Pack



Convenient small pack contains 32 Jubilee clips.

Description	Size (mm)	Pack Qty (pcs)
<b>CONTENTS</b>		
Jubilee Clips	9.5 - 12	6
	11 - 16	6
	13 - 20	6
	16 - 22	4
	18 - 25	4
	22 - 30	2
	25 - 35	2
	30 - 40	2

Product Code	Product Code	Pack Qty (pcs)	Carton Qty (packs)
Zinc Protected Mild Steel	304 Stainless Steel		
<b>PACK</b>			
JUBPPMS	JUBPPSS	32	15
TYPE - JUB SUB TYPE - JUB07/08			

## Jubilee Clip Workshop Pack



Contains 143 of the most popular Jubilee Clips in a sturdy plastic container suitable for any tough industrial environment.

Description	Size (mm)	Pack Qty (pcs)
<b>CONTENTS</b>		
Jubilee Clips	9.5 - 12	24
	11 - 16	32
	13 - 20	28
	16 - 22	13
	18 - 25	13
	22 - 30	13
	25 - 35	14
	30 - 40	12
	32 - 45	7

Product Code	Product Code	Pack Qty (pcs)	Carton Qty (packs)
Zinc Protected Mild Steel	304 Stainless Steel		
<b>PACK</b>			
JUBHCP143MS	JUBHCP143SS	143	4
TYPE - JUB SUB TYPE - JUB07/08			

## Junior Clip Assortment Pack



Assortment of 165 mild steel Jubilee® Junior (mini) clips suitable for connecting hoses in low pressure applications from 7mm to 14mm.

Description	Size (mm)	Pack Qty (pcs)
<b>CONTENTS</b>		
Junior Clips	7 - 9	25
	8 - 10	25
	9 - 11	25
	10 - 12	30
	11 - 13	30
	12 - 14	30

Product Code	Pack Qty (pcs)	Carton Qty (packs)
<b>Zinc Protected Mild Steel</b>		
<b>PACK</b>		
JUBJA165MS	165	12
TYPE - JUB SUB TYPE - JUB12		

## Junior Clip Pocket Pack



A useful pack containing 54 mild steel Jubilee Junior clips covering fittings from 7mm to 16mm.

Description	Size (mm)	Pack Qty (pcs)
<b>CONTENTS</b>		
Jubilee Clips	7 - 9	6
	8 - 10	6
	9 - 11	6
	10 - 12	8
	11 - 13	10
	12 - 14	8
	13 - 15	6
	14 - 16	4

Product Code	Pack Qty (pcs)	Carton Qty (packs)
<b>Zinc Protected Mild Steel</b>		
<b>PACK</b>		
JUBPPJMS	54	15
TYPE - JUB SUB TYPE - JUB12		

## 'P' Clip Kit



Contains 110 of the most accepted sizes in a versatile re-useable plastic container suitable for any challenging environment.

Description	Size (mm)	Pack Qty (pcs)
<b>CONTENTS</b>		
P Clips	5	14
	6	14
	8	12
	10	10
	13	8
	16	8
	19	8
	21	8
	25	8
	29	12
	35	8

Product Code	Product Code	Pack Qty (pcs)	Carton Qty (packs)
Zinc Protected Mild Steel	304 Stainless Steel		
<b>PACK</b>			
JUBJCK110MS	JUBJCK110SS	110	4
TYPE - JUB SUB TYPE - JUB07/08			

## Wingspade Pocket Pack



Pocket pack contains 22 mild steel Jubilee Wingspade clips covering fittings from 9.5mm-50mm.

Description	Size (mm)	Pack Qty (pcs)
<b>CONTENTS</b>		
Wingspade Clips	9.5 - 12	4
	11 - 16	4
	13 - 20	4
	16 - 27	4
	20 - 32	2
	30 - 45	2
	32 - 50	2

Product Code	Pack Qty (pcs)	Carton Qty (packs)
<b>Zinc Protected Mild Steel</b>		
<b>PACK</b>		
JUBPPWS	22	15
TYPE - JUB SUB TYPE - JUB12		

## 'O' Clip Kit



The absence of a screw mechanism allows 'O' Clips to be useful on extremely small hoses.

Comes with 175 assorted 2 ear mild steel 'O' clips

Description	Size (mm)	Pack Qty (pcs)
<b>CONTENTS</b>		
O Clips	5 - 7	20
	7 - 9	25
	9 - 11	20
	11 - 13	20
	13 - 15	30
	14 - 17	20
	15 - 18	20
	17 - 20	20

Product Code	Product Code	Pack Qty (pcs)	Carton Qty (packs)
Zinc Protected Mild Steel	304 Stainless Steel		
<b>PACK</b>			
JUBOK175MS	JUBOK175SS	175	12
TYPE - JUB SUB TYPE - JUB07/08			

## 'O' Clip Kit & Tool



Comes with 175 assorted 2 ear mild steel 'O' clips and a pincer tool for securing the clips

Description	Size (mm)	Pack Qty (pcs)
<b>CONTENTS</b>		
O Clips	5 - 7	20
	7 - 9	25
	9 - 11	20
	11 - 13	20
	13 - 15	30
	14 - 17	20
	15 - 18	20
	17 - 20	20
Side Closing Pincer Tool	-	1

Product Code	Product Code	Pack Qty (pcs)	Carton Qty (packs)
Zinc Protected Mild Steel	304 Stainless Steel		
<b>PACK</b>			
JUBOKP175MS	JUBOKP175SS	176	12
TYPE - JUB SUB TYPE - JUB07/08			

# Jubilee Dispensers



## Jubilee Clip Handy Pack



This Jubilee Handy Pack contains 100 Jubilee Clips and sits as well on a trade counter as it does in a workshop, or the back of a van!

Description	Size (mm)	Pack Qty (pcs)
<b>CONTENTS</b>		
Jubilee Clips	9.5 - 12	10
	11 - 16	10
	13 - 20	10
	16 - 22	10
	18 - 25	10
	22 - 30	10
	25 - 35	10
	30 - 40	10
	32 - 45	10
	35 - 50	10

Product Code	Product Code	Pack Qty (pcs)	Carton Qty (packs)
<b>Zinc Protected Mild Steel</b>	<b>304 Stainless Steel</b>		
<b>PACK</b>			
JUBHP100MS	JUBHP100SS	100	4
TYPE - JUB	SUB TYPE - JUB07/08		

## Jubilee Clip Dispenser



The Jubilee Clip Dispenser comes with ten, each of the most popular sizes of clip covering an adjustment range from 9.5mm up to 50mm and also includes 3 Jubilee Flexdrivers.

Description	Size (mm)	Pack Qty (pcs)
<b>CONTENTS</b>		
Jubilee Clips	9.5 - 12	10
	11 - 16	10
	13 - 20	10
	16 - 22	10
	18 - 25	10
	22 - 30	10
	25 - 35	10
	30 - 40	10
	32 - 45	10
	35 - 50	10
Flexidriver Tool	-	3

Product Code	Product Code	Pack Qty (pcs)	Carton Qty (packs)
<b>Zinc Protected Mild Steel</b>	<b>304 Stainless Steel</b>		
<b>PACK</b>			
JUBCD100MS	JUBCD100SS	103	4
TYPE - JUB	SUB TYPE - JUB07/08		

## Jubilee Large Clip Dispenser



The Jubilee Large Clip Dispenser comes with 140 clips, ten of each of the most popular sizes of clip covering an adjustment range from 9.5mm up to 80mm. Also includes 3 Jubilee Flexdrivers.

Description	Size (mm)	Pack Qty (pcs)
<b>CONTENTS</b>		
Jubilee Clips	9.5-12	10
	11-16	10
	13-20	10
	16-22	10
	18-25	10
	22-30	10
	25-35	10
	30-40	10
	32-45	10
	35-50	10
	40-55	10
	45-60	10
	55-70	10
	60-80	10
Flexidriver Tool	-	3

Product Code	Product Code	Pack Qty (pcs)	Carton Qty (packs)
<b>Zinc Protected Mild Steel</b>	<b>304 Stainless Steel</b>		
<b>PACK</b>			
JUBCD140MS	JUBCD140SS	143	2
TYPE - JUB	SUB TYPE - JUB07/08		

## Mega Clip Dispenser



This latest addition to the range, the Jubilee Mega Dispenser, comes with 920 Jubilee Clips (92 boxes in total) covering an adjustment range from 9.5mm up to 70mm. Also includes 5 Jubilee Flexdrivers.

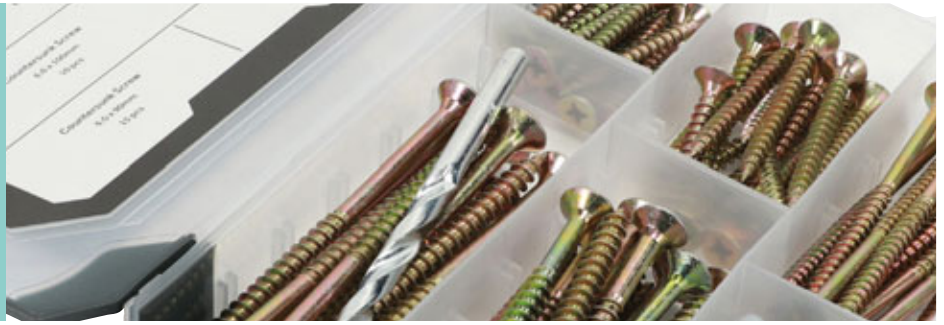
Description	Size (mm)	Pack Qty (pcs)
<b>CONTENTS</b>		
Jubilee Clips	9.5-12	100
	11-16	100
	13-20	100
	16-22	80
	18-25	80
	22-30	70
	25-35	60
	30-40	60
	32-45	60
	35-50	50
	40-55	50
	45-60	50
	55-70	50
Flexidriver Tool	-	5

Product Code	Product Code	Pack Qty (pcs)	Carton Qty (packs)
<b>Zinc Protected Mild Steel</b>	<b>304 Stainless Steel</b>		
<b>PACK</b>			
JUBMD920MS	JUBMD920SS	920	1
TYPE - JUB	SUB TYPE - JUB07/08		

New

# Assorted Trays

Comprehensive range of problem solving handy mixed sets. Offering a wide variety of commonly used items designed to cover the majority of small jobs that need a quick-fix. Packaged in robust trays that can be securely clipped shut, ready for the next task.



## Mixed Screws, Plugs & Drill Bit



### Zinc

Countersunk, zinc plated and clear passivated woodscrews with nylon plugs for fixing to masonry. 6mm masonry drill bit included.



### Yellow

Countersunk, zinc plated and yellow passivated woodscrews with nylon plugs for fixing to masonry. 6mm masonry drill bit included.



### Stainless Steel

Countersunk, stainless steel woodscrews with nylon plugs for fixing to masonry. Ideal for outdoor applications. 6mm masonry drill bit included.

Product Code	Size (mm)	Driver Bit Size	Qty (pcs)	Pack Qty (pcs)	Carton Qty (packs)
TRAY240				261	15
Screws	3.5 x 25	PZ2	50		
	4.0 x 25	PZ2	30		
	4.0 x 30	PZ2	25		
	4.0 x 40	PZ2	25		
	5.0 x 40	PZ2	15		
	5.0 x 50	PZ2	20		
Nylon Plugs	5.0 x 80	PZ2	20		
Masonry Drill Bit	6.0 x 30	-	75		
	6.0 x 85	-	1		
TRAY300				91	15
Screws	5.0 x 40	PZ2	15		
	5.0 x 50	PZ2	15		
	5.0 x 80	PZ2	15		
	6.0 x 90	PZ3	15		
	6.0 x 100	PZ3	10		
Nylon Plugs	8.0 x 40	-	20		
Masonry Drill Bit	8.0 x 120	-	1		

TYPE - TRY SUB TYPE - TRY01

Product Code	Size (mm)	Driver Bit Size	Qty (pcs)	Pack Qty (pcs)	Carton Qty (packs)
TRAY260				261	15
Screws	3.5 x 25	PZ2	50		
	4.0 x 25	PZ2	30		
	4.0 x 30	PZ2	25		
	4.0 x 40	PZ2	25		
	5.0 x 40	PZ2	15		
	5.0 x 50	PZ2	20		
Nylon Plugs	5.0 x 80	PZ2	20		
Masonry Drill Bit	6.0 x 30	-	75		
	6.0 x 85	-	1		
TRAY320				91	15
Screws	5.0 x 40	PZ2	15		
	5.0 x 50	PZ2	15		
	5.0 x 80	PZ2	15		
	6.0 x 90	PZ3	15		
	6.0 x 100	PZ3	10		
Nylon Plugs	8.0 x 40	-	20		
Masonry Drill Bit	8.0 x 120	-	1		

TYPE - TRY SUB TYPE - TRY01

Product Code	Size (mm)	Driver Bit Size	Qty (pcs)	Pack Qty (pcs)	Carton Qty (packs)
TRAY280				261	15
Screws	3.5 x 25	PZ2	50		
	4.0 x 25	PZ2	30		
	4.0 x 30	PZ2	25		
	4.0 x 40	PZ2	25		
	5.0 x 40	PZ2	15		
	5.0 x 50	PZ2	20		
Nylon Plugs	5.0 x 80	PZ2	20		
Masonry Drill Bit	6.0 x 30	-	75		
	6.0 x 85	-	1		
TRAY340				91	15
Screws	5.0 x 40	PZ2	15		
	5.0 x 50	PZ2	15		
	5.0 x 80	PZ2	15		
	6.0 x 90	PZ3	15		
	6.0 x 100	PZ3	10		
Nylon Plugs	8.0 x 40	-	20		
Masonry Drill Bit	8.0 x 120	-	1		

TYPE - TRY SUB TYPE - TRY01

## Mixed Woodscrews



### Yellow

Countersunk, zinc plated and yellow passivated woodscrews used in various types of timber and manmade boards.



### Zinc

Countersunk, zinc plated and clear passivated woodscrews used in various types of timber and manmade boards.



### Stainless Steel

Countersunk, stainless steel woodscrews used in various types of timber and manmade boards. Ideal for outdoor applications.

Product Code	Size (mm)	Driver Bit Size	Tray Qty (pcs)	Pack Qty (pcs)	Carton Qty (packs)
TRAY360				355	15
	3.5 x 15	PZ2	100		
	3.5 x 25	PZ2	50		
	4.0 x 20	PZ2	40		
	4.0 x 25	PZ2	35		
	4.0 x 30	PZ2	30		
	4.0 x 40	PZ2	25		
	5.0 x 50	PZ2	30		
	5.0 x 70	PZ2	25		
	5.0 x 80	PZ2	20		

TYPE - TRY SUB TYPE - TRY01

Product Code	Size (mm)	Driver Bit Size	Tray Qty (pcs)	Pack Qty (pcs)	Carton Qty (packs)
TRAY370				355	15
	3.5 x 15	PZ2	100		
	3.5 x 25	PZ2	50		
	4.0 x 20	PZ2	40		
	4.0 x 25	PZ2	35		
	4.0 x 30	PZ2	30		
	4.0 x 40	PZ2	25		
	5.0 x 50	PZ2	30		
	5.0 x 70	PZ2	25		
	5.0 x 80	PZ2	20		

TYPE - TRY SUB TYPE - TRY01

Product Code	Size (mm)	Driver Bit Size	Tray Qty (pcs)	Pack Qty (pcs)	Carton Qty (packs)
TRAY380				355	15
	3.5 x 15	PZ2	100		
	3.5 x 25	PZ2	50		
	4.0 x 20	PZ2	40		
	4.0 x 25	PZ2	35		
	4.0 x 30	PZ2	30		
	4.0 x 40	PZ2	25		
	5.0 x 50	PZ2	30		
	5.0 x 70	PZ2	25		
	5.0 x 80	PZ2	20		

TYPE - TRY SUB TYPE - TRY01



**Mixed Set Screws, Nuts & Washers**



**Zinc**

Zinc plated and clear passivated hex headed set screws with conforming nuts and washers.

Product Code	Size (mm)	Tray Qty (pcs)	Pack Qty (pcs)	Carton Qty (packs)
TRAY620		206	15	
Set Screw (DIN 933)	6.0 x 16	20		
Set Screw (DIN 933)	6.0 x 25	20		
Set Screw (DIN 933)	8.0 x 25	10		
Set Screw (DIN 933)	8.0 x 35	4		
Set Screw (DIN 933)	10.0 x 40	4		
Set Screw (DIN 933)	10.0 x 50	5		
Hex Nuts (DIN934)	M6	40		
Hex Nuts (DIN934)	M8	15		
Hex Nuts (DIN934)	M10	8		
Form A Washers (DIN 125)	M6	40		
Form A Washers (DIN 125)	M8	20		
Form A Washers (DIN 125)	M10	20		

TYPE - TRY SUB TYPE - TRY01



**A2 Aust. SS**

A2 stainless steel hex headed set screws with conforming nuts and washers. High resistance to corrosion and ideal for outdoor applications.

Product Code	Size (mm)	Tray Qty (pcs)	Pack Qty (pcs)	Carton Qty (packs)
TRAY640		206	15	
Set Screw (DIN 933)	6.0 x 16	20		
Set Screw (DIN 933)	6.0 x 25	20		
Set Screw (DIN 933)	8.0 x 25	10		
Set Screw (DIN 933)	8.0 x 35	4		
Set Screw (DIN 933)	10.0 x 40	4		
Set Screw (DIN 933)	10.0 x 50	5		
Hex Nuts (DIN934)	M6	40		
Hex Nuts (DIN934)	M8	15		
Hex Nuts (DIN934)	M10	8		
Form A Washers (DIN 125)	M6	40		
Form A Washers (DIN 125)	M8	20		
Form A Washers (DIN 125)	M10	20		

TYPE - TRY SUB TYPE - TRY01

**Mixed Self-Tapping Screws**



**Zinc**

Zinc plated self-tapping screws. Three different head types for a wide range of metal to metal applications. Please note a pre-drilled hole is required.

Product Code	Head Type	Size (imp.)	Recess	Tray Qty (pcs)	Pack Qty (pcs)	Carton Qty (packs)
TRAY440				515	15	
Pan Head	6 x 1/2	PZ2	80			
Pan Head	6 x 3/4	PZ2	55			
Pan Head	8 x 1/2	PZ2	55			
Pan Head	8 x 3/8	PZ2	45			
Pan Head	8 x 3/4	PZ2	45			
Pan Head	8 x 1	PZ2	25			
Countersunk	8 x 3/4	PZ2	45			
Countersunk	8 x 1	PZ2	35			
Countersunk	10 x 1 1/4	PZ2	25			
Flange Head	8 x 1/2	PZ2	45			
Flange Head	8 x 3/4	PZ2	35			
Flange Head	8 x 1	PZ2	25			

TYPE - TRY SUB TYPE - TRY01

**Mixed Nuts**



**Zinc**

Zinc plated and clear passivated nuts. Contains four commonly used types of nut to suit a wide range of applications.

Product Code	Nut Type	Size (mm)	Tray Qty (pcs)	Pack Qty (pcs)	Carton Qty (packs)
TRAY540			243	15	
Hex (DIN 934)	M4	70			
Hex (DIN 934)	M6	50			
Hex (DIN 934)	M8	20			
Hex (DIN 934)	M10	10			
Hex (DIN 934)	M12	8			
T Nylon (DIN 985)	M6	30			
T Nylon (DIN 985)	M8	15			
T Nylon (DIN 985)	M10	8			
Wing	M6	15			
Wing	M8	10			
Connector (DIN 6334)	M8	5			
Connector (DIN 6334)	M10	2			

TYPE - TRY SUB TYPE - TRY01

**Mixed Washers**



**Zinc**

Zinc plated and clear passivated steel washers. Three types of washer to suit a wide range of applications.

Product Code	Washer Type	Size (mm)	Tray Qty (pcs)	Pack Qty (pcs)	Carton Qty (packs)
TRAY580			291	15	
Form A (DIN 125)	M4	40			
Form A (DIN 125)	M6	40			
Form A (DIN 125)	M8	20			
Form A (DIN 125)	M10	30			
Form A (DIN 125)	M12	15			
Form A (DIN 125)	M14	10			
Form A (DIN 125)	M16	8			
Penny / Repair	M6 x 25	15			
Penny / Repair	M8 x 25	20			
Penny / Repair	M8 x 40	4			
Penny / Repair	M10 x 25	20			
Penny / Repair	M10 x 40	4			
Spring - DIN7980	M6	20			
Spring - DIN7980	M8	20			
Spring - DIN7980	M10	25			

TYPE - TRY SUB TYPE - TRY01

**Mixed Tap Repair Washers**



**Rubber Fibre**

Flat, dome, flex and fibre washers for repairing taps of various sizes.

Product Code	Washer Type	Material	Size (imp.)	Tray Qty (pcs)	Pack Qty (pcs)	Carton Qty (packs)
TRAY980				159	15	
Flat Tap	Rubber	3/8	15			
Flat Tap	Rubber	1/2	12			
Flat Tap	Rubber	5/8	5			
Flat Tap	Rubber	3/4	6			
Dome	Rubber	1/2	12			
Dome	Rubber	3/4	4			
Delta	Rubber	1/2	15			
Delta	Rubber	3/4	10			
Tanto Flex	Rubber	1/2	10			
Tanto Flex	Rubber	3/4	10			
Fibre	Fibre	1/2	30			
Fibre	Fibre	3/4	30			

TYPE - TRY SUB TYPE - TRY01

**Mixed Plasterboard Fixings**



**Zinc**

**Yellow**

Plasterboard anchors and fixings designed for both light and heavy duty applications.

Product Code	Finish	Head Type	Recess Type	Size (mm)	Tray Qty (pcs)	Pack Qty (pcs)	Carton Qty (packs)
TRAY520					106	15	
Metal Cavity Anchors	Zinc	-	Combi	M5 x 37	10		
Metal Cavity Anchors	Zinc	-	Combi	M5 x 52	6		
Metal Cavity Anchors	Zinc	-	Combi	M5 x 65	6		
Metal Speed Plugs	Zinc	-	Cross	31.5	22		
Metal Speed Plug Screws	Zinc	Pan Head	Combi	4.5 x 30	22		
Woodscrews	Yellow	Countersunk	Pozi	4.0 x 40	20		
Multi-Purpose Plugs	Grey	-	-	M6 x 35	20		

TYPE - TRY SUB TYPE - TRY01

## Mixed Nails



Galvanised

Bright

Galvanised and bright steel nails for internal and exterior applications.

Product Code	Finish	Size (mm)	Tray Qty (pcs)	Pack Qty (pcs)	Carton Qty (packs)
TRAY660				345	15
	Clout Nails	Galvanised	20 x 3.00	35	
	Clout Nails	Galvanised	25 x 3.00	25	
	Presser Point Staples	Galvanised	25 x 2.00	75	
	Annular Ringshank Nails	Bright	25 x 2.65	50	
	Annular Ringshank Nails	Bright	30 x 3.26	30	
	Annular Ringshank Nails	Bright	40 x 3.26	30	
	Round Wire Nails	Bright	50 x 2.65	50	
	Round Wire Nails	Bright	65 x 3.35	25	
	Round Wire Nails	Bright	75 x 3.75	25	

TYPE - TRY

SUB TYPE - TRY01

## Mixed Pins & Nails



Bright

Bright nails and pins for a wide range of internal applications.

Product Code	Finish	Size (mm)	Tray Qty (pcs)	Pack Qty (pcs)	Carton Qty (packs)
TRAY680				650	15
	Panel Pins	Bright	25 x 1.60	150	
	Panel Pins	Bright	30 x 1.60	100	
	Panel Pins	Bright	40 x 1.60	80	
	Panel Pins	Bright	50 x 2.00	75	
	Oval Nails	Bright	40	80	
	Oval Nails	Bright	50	50	
	Oval Nails	Bright	65	40	
	Round Wire Nails	Bright	50 x 2.65	50	
	Round Wire Nails	Bright	65 x 3.35	25	

TYPE - TRY

SUB TYPE - TRY01

## Mixed Hooks & Eyes



Electro Brass

Zinc

PVC coated, zinc and brass plated, hooks and eyes. Nylon plugs included for applications where fixing to masonry is required.

Product Code	Finish/Colour	Size (mm)	Tray Qty (pcs)	Pack Qty (pcs)	Carton Qty (packs)
TRAY700				133	15
	Round Cup Hooks	Zinc / White	25	12	
	Round Cup Hooks	Zinc / White	32	10	
	Round Cup Hooks	Zinc / White	38	6	
	Round Cup Hooks	Zinc / White	48	5	
	Round Cup Hooks	Electro Brass	25	12	
	Round Cup Hooks	Electro Brass	38	6	
	L Hooks	Electro Brass	25	12	
	L Hooks	Electro Brass	38	10	
	Screw Eyes	Zinc	37	5	
	Nylon Plugs	Grey	5.0 x 25	35	
	Nylon Plugs	Grey	6.0 x 30	20	

TYPE - TRY

SUB TYPE - TRY01

## Mixed Picture Hanging Kit



Electro Brass

Zinc

Brass plated picture plates, hangers, D-rings, picture nails, sawtooth brackets and hooks. Nylon line and steel hanging wire included.

Product Code	Finish/Material	Size (mm)	Length (m)	Tray Qty (pcs)	Pack Qty (pcs)	Carton Qty (packs)
TRAY720					179	15
	Nylon Rope	Nylon	-	3	1	
	Steel Wire	Steel	-	3	1	
	Plastic Hanger	White	31 x 16	-	6	
	Picture Plates	Electro Brass	38 x 38	-	6	
	Picture Nails	Electro Brass	1.60 x 30	-	80	
	D-Rings	Electro Brass	10	-	6	
	D-Rings	Electro Brass	15	-	4	
	Single Picture Hooks	Electro Brass	25 x 5	-	25	
	Single Picture Hooks	Electro Brass	36 x 6	-	20	
	Double Picture Hooks	Electro Brass	25 x 32	-	10	
	Sawtooth Hanger	Electro Brass	42	-	2	
	Round Cup Hooks	Electro Brass	37	-	6	
	Round Cup Hooks	Electro Brass	49	-	12	

TYPE - TRY

SUB TYPE - TRY01

## Mixed Cable Clips



Mixed Colours

Nail in cable clips including twin and earth (T&E), flat cable clips, round cable clips and bell wire clips.

Product Code	Colour	Size (mm)	Tray Qty (pcs)	Pack Qty (pcs)	Carton Qty (packs)
TRAY780				290	15
	T & E Flat Cable	Grey	1.0	20	
	T & E Flat Cable	Grey	1.5	30	
	T & E Flat Cable	Grey	2.5	30	
	T & E Flat Cable	Grey	6.0	20	
	Round Cable	White	7	45	
	Round Cable	Black	7	45	
	Bell Wire	White	-	100	

TYPE - TRY

SUB TYPE - TRY01

## Mixed Hose Clips



Steel

Zinc plated carbon steel, worm drive hose clips with 7mm slotted hex head screws.

Product Code	Size (mm)	Tray Qty (pcs)	Pack Qty (pcs)	Carton Qty (packs)
TRAY970			25	15
	11 - 16	8		
	16 - 22	6		
	18 - 25	4		
	22 - 30	2		
	25 - 35	2		
	30 - 40	3		

TYPE - TRY

SUB TYPE - TRY01

## Mixed Key Tags



Mixed Colours

A multi-coloured key tags with removable card inserts for easy colour coding of keys for identification.

Product Code	Colour	Tray Qty (pcs)	Pack Qty (pcs)	Carton Qty (packs)
TRAY800			48	15
	Blue	8		
	Green	8		
	Yellow	8		
	Red	8		
	White	8		
	Black	8		

TYPE - TRY

SUB TYPE - TRY01